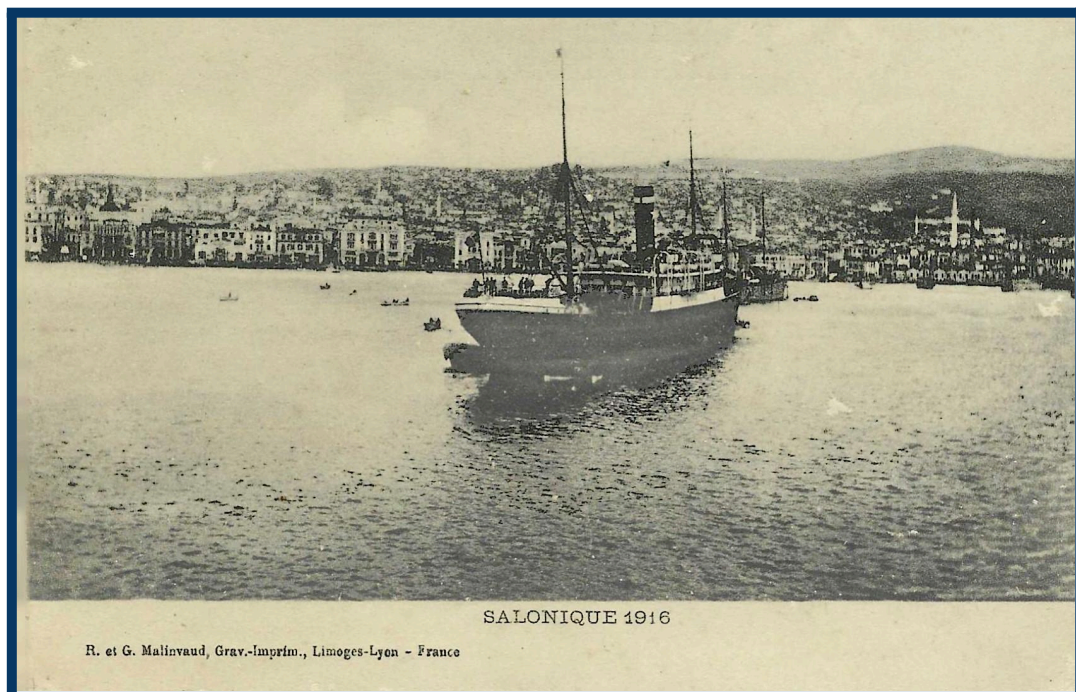


Rade de
Salonique



3 SALONIQUE (1916) — En Rade de Salonique

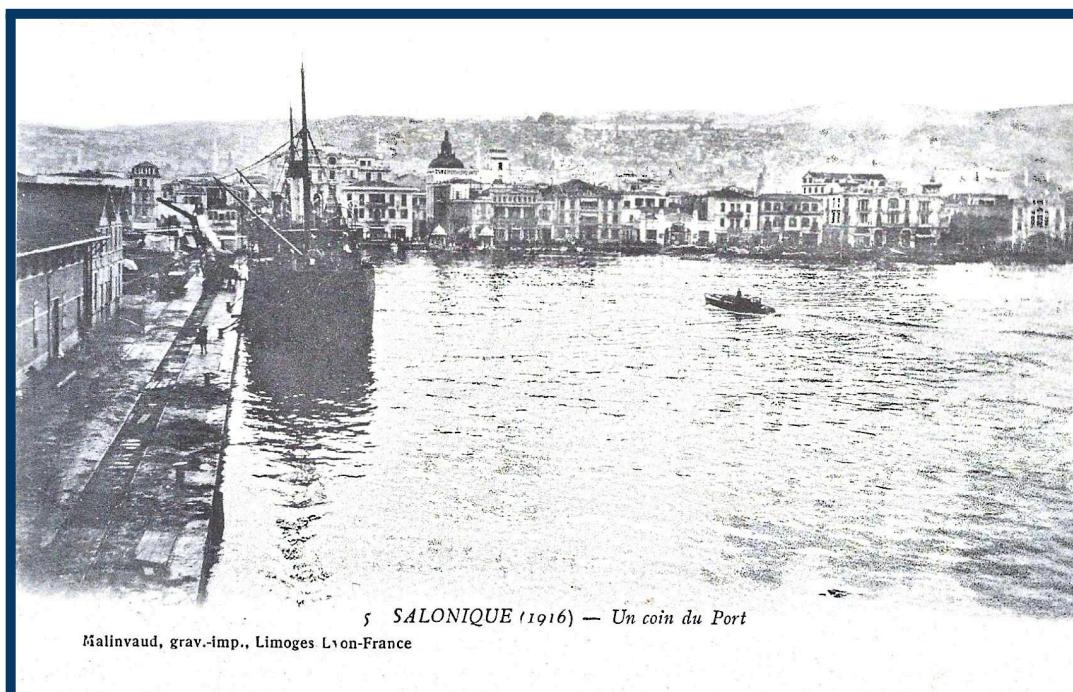
Malinvaud, grav.-imp., Limoges-Lyon-France



SALONIQUE 1916

R. et G. Malinvaud, Grav.-Imprim., Limoges-Lyon - France

Le Port



5 SALONIQUE (1916) — Un coin du Port

Malinvaud, grav.-imp., Limoges Lyon-France



La Tour Blanche

26. - Malinvaud, Gr.-Imp., Limoges-Lyon

SALONIQUE 1916

La Tour Blanche



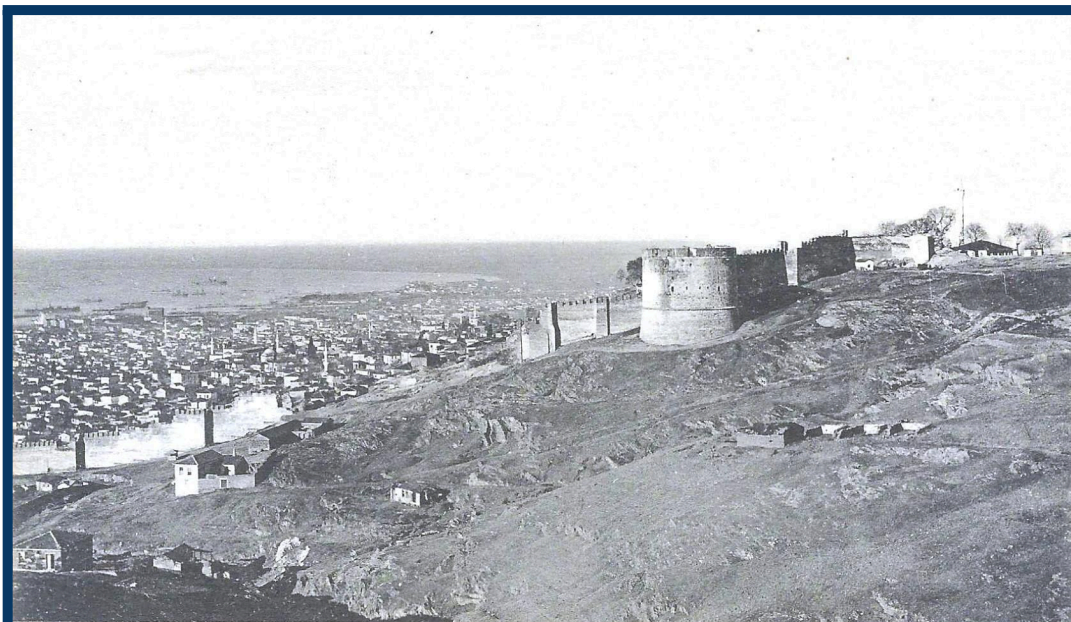
SALONIQUE 1916. - Promenade de la Tour Blanche

Malinvaud, Gr.-Imp., Limoges-Lyon



7 SALONIQUE (1916) — La Promenade favorite des habitants de Salonique

Malinvaud, grav.-Imp, Limoges-Lyon France



La Tour Yedi Kahlé

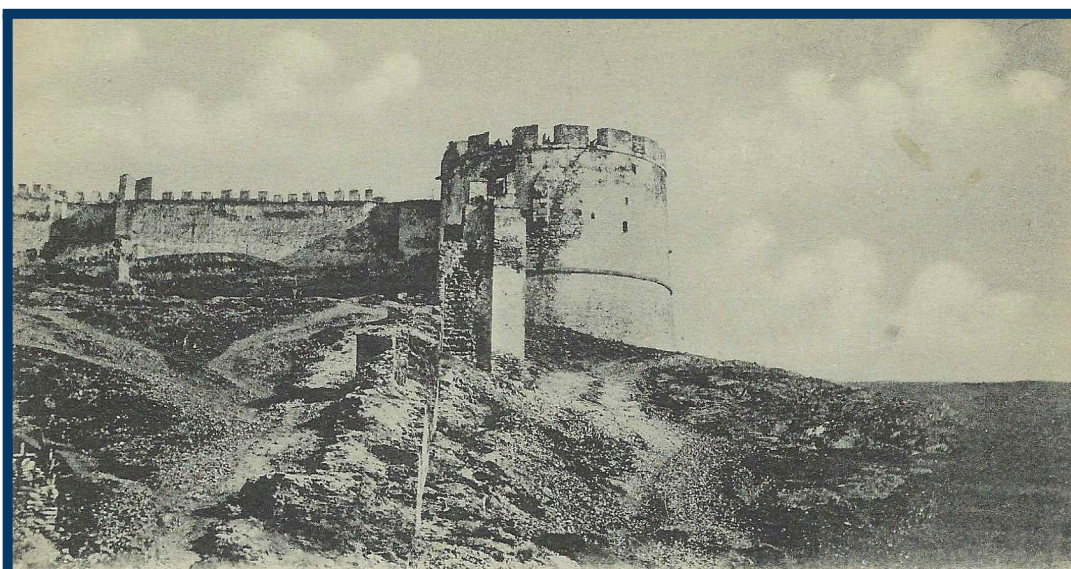
25 - Malinvaud, Gr.-Imp., Limoges-Lyon

SALONIQUE 1916



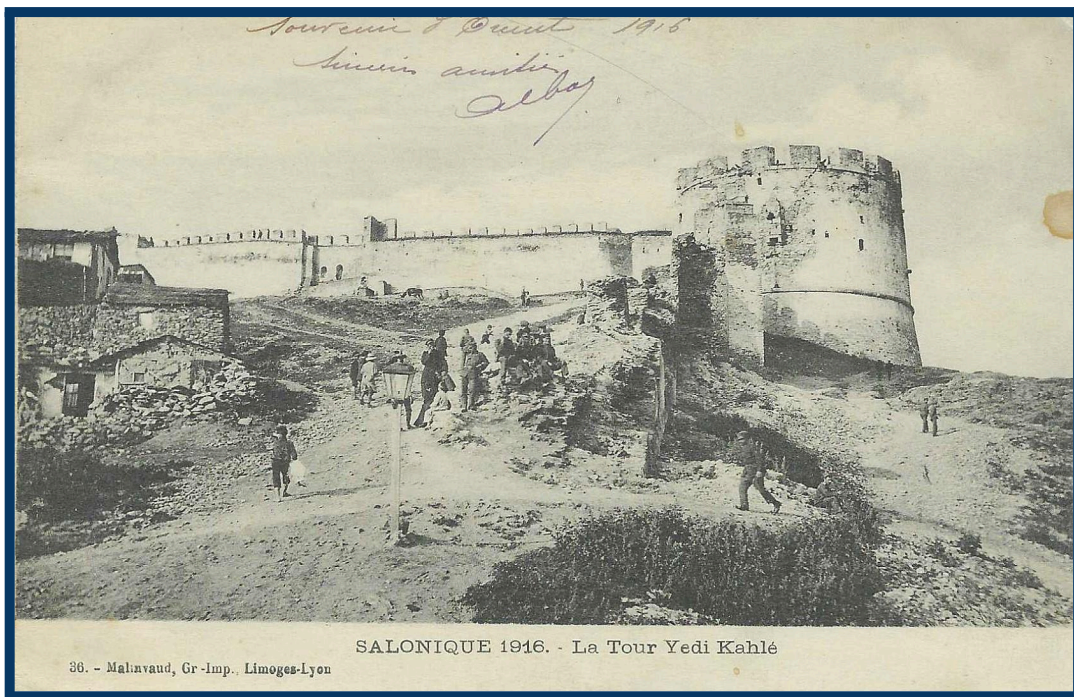
49 - Malinvaud, Gr.-Imp., Limoges-Lyon

SALONIQUE 1916



10 SALONIQUE (1916) — Fortifications de Salonique

Malinvaud, grav. -imp., Limoges-Lyon-France



La Tour Yedi Kahlé

SALONIQUE 1916. - La Tour Yedi Kahlé

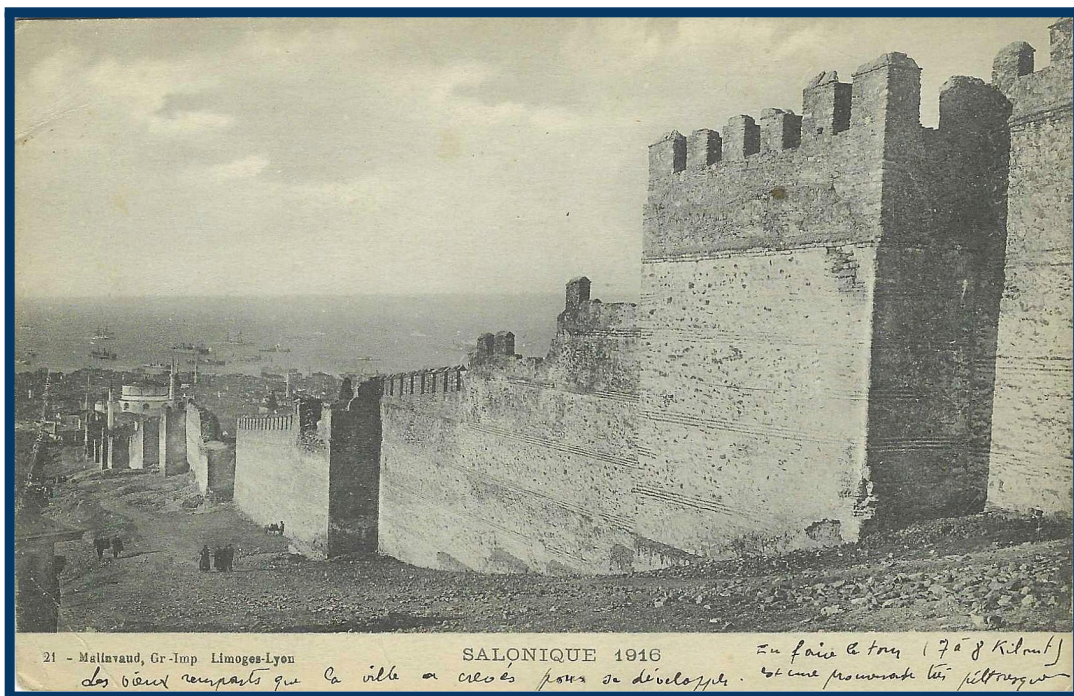
36. - Malinvaud, Gr-imp., Limoges-Lyon



Les Remparts

8 SALONIQUE (1916) — Un coin des Remparts

Malinvaud, grav.-imp., Limoges-Lyon France



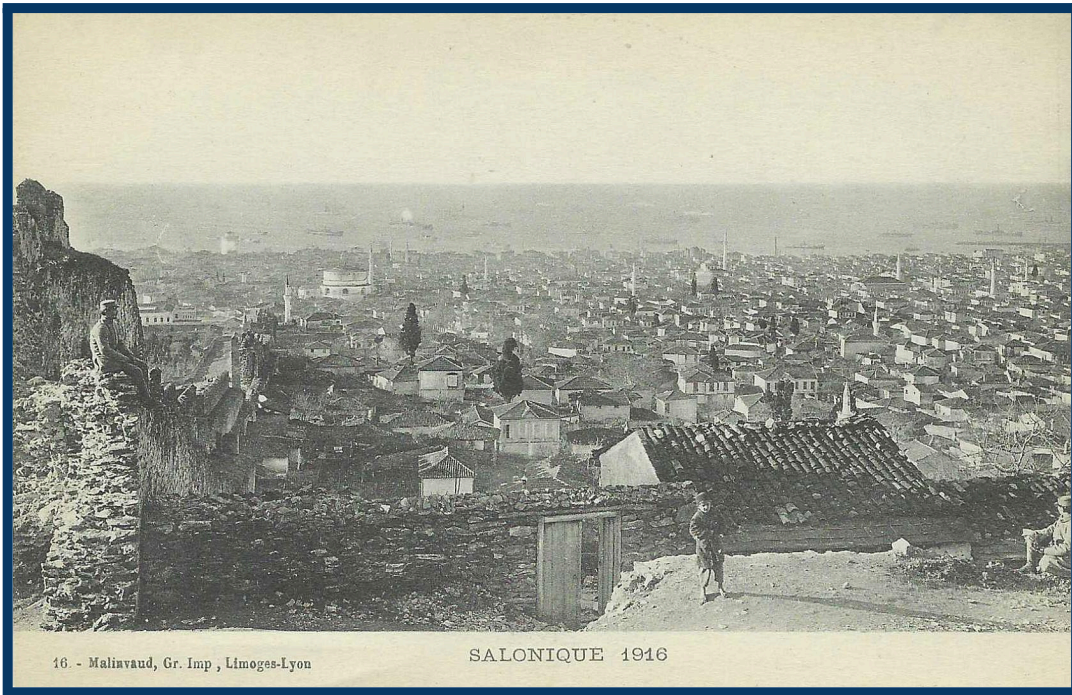
Les Remparts

21 - Malinvaud, Gr-imp Limoges-Lyon

SALONIQUE 1916

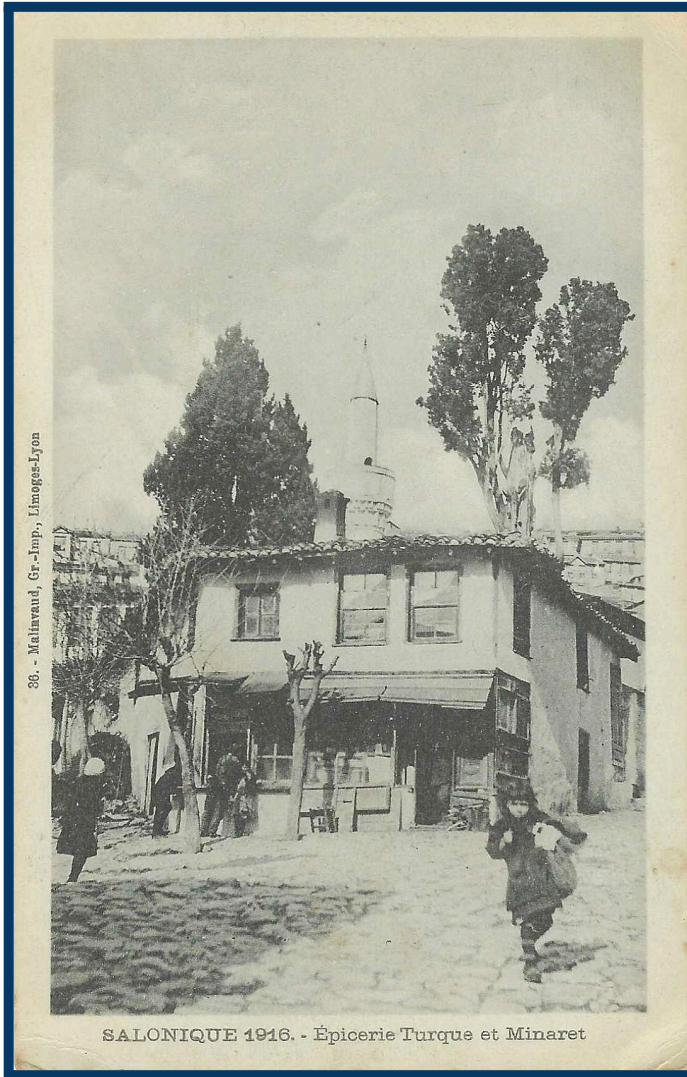
des vieux remparts que la ville a créés pour se développer.

En face à très (708 Kéant) est une promenade très pittoresque

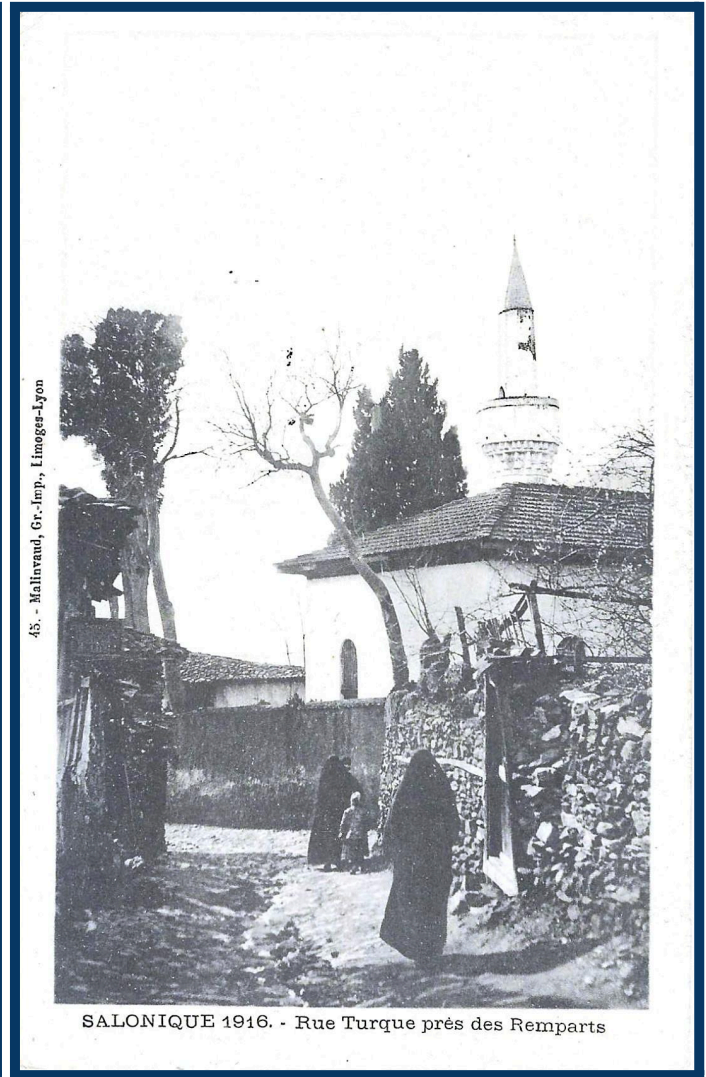


Panorama de
Salonique





Epicerie Turque et Minaret



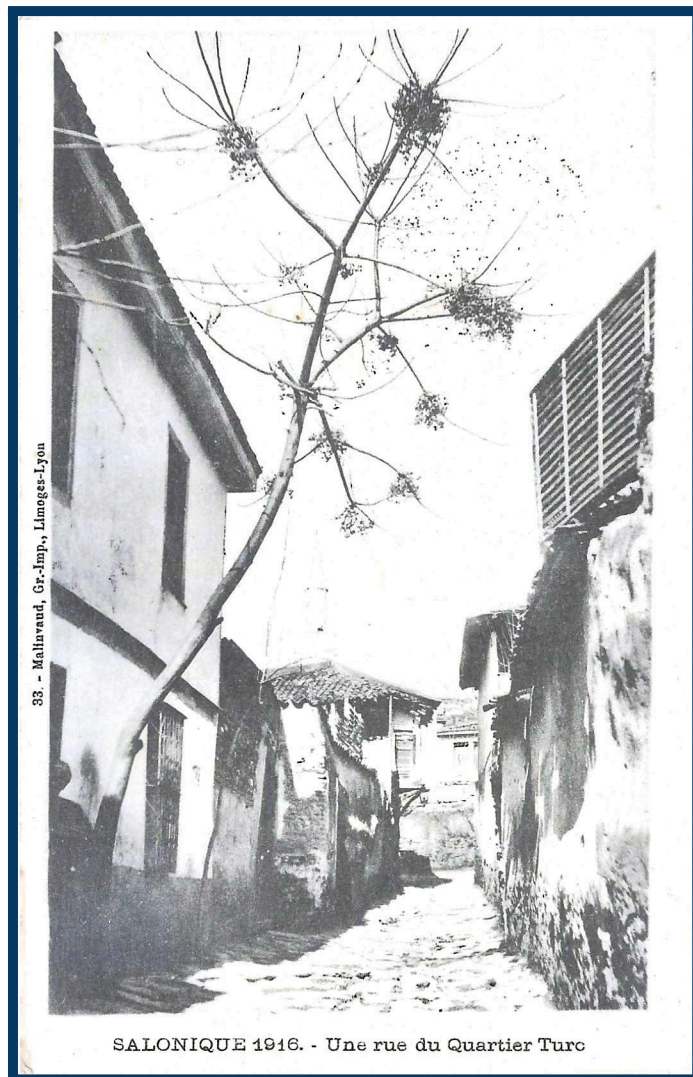
Rue Turque



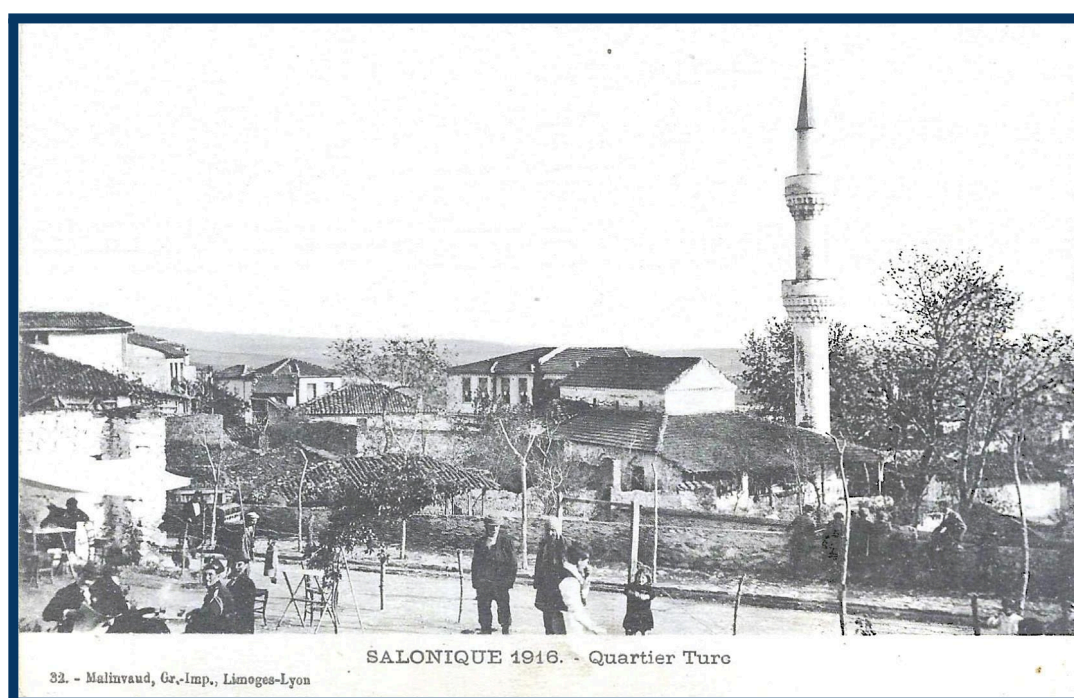
Cimetière Turc

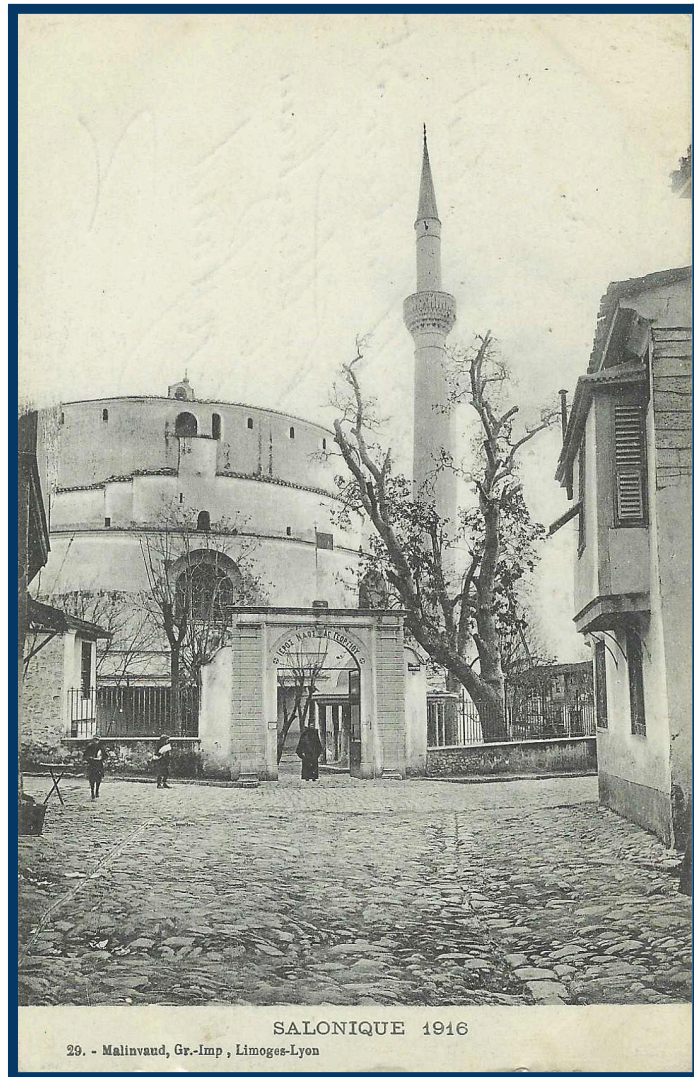
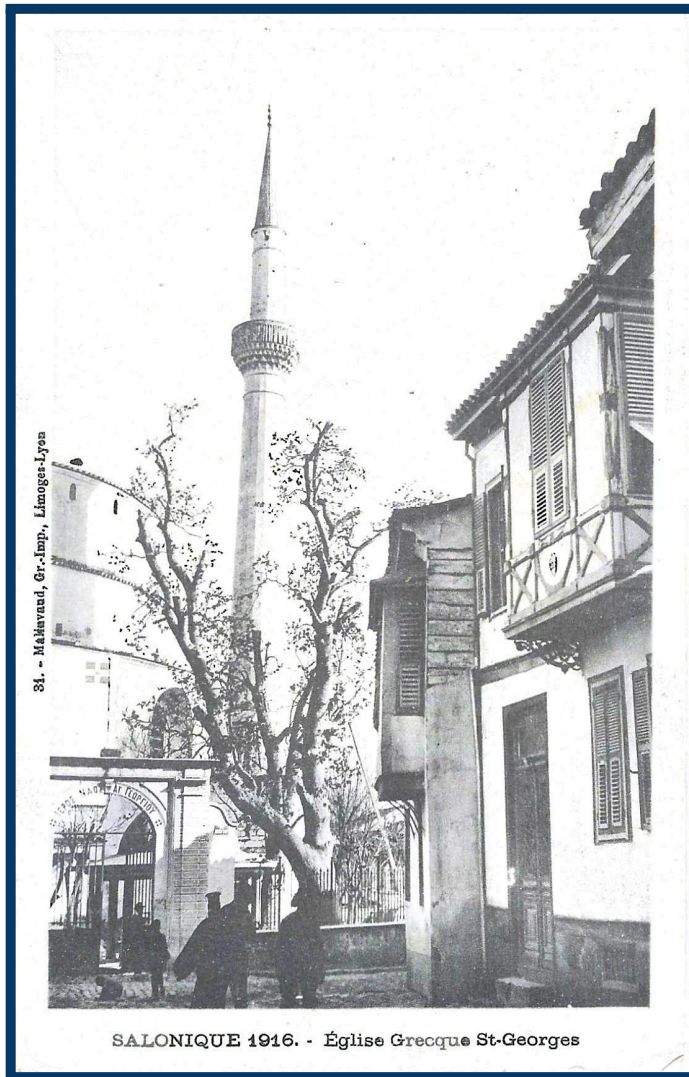


Minaret

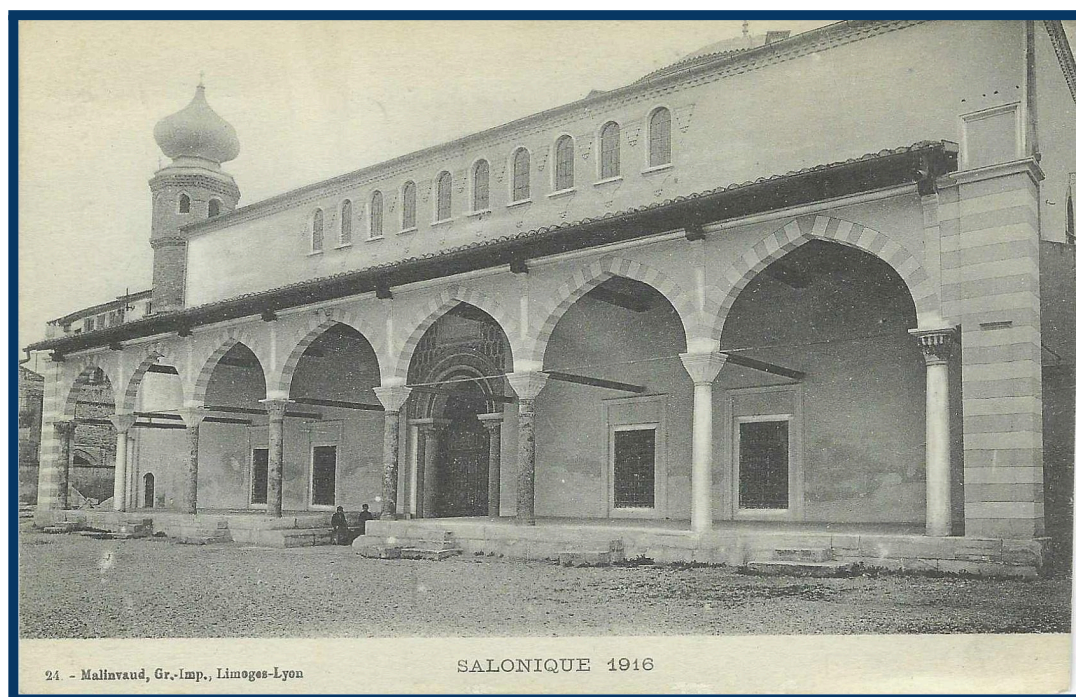


Quartier Turc

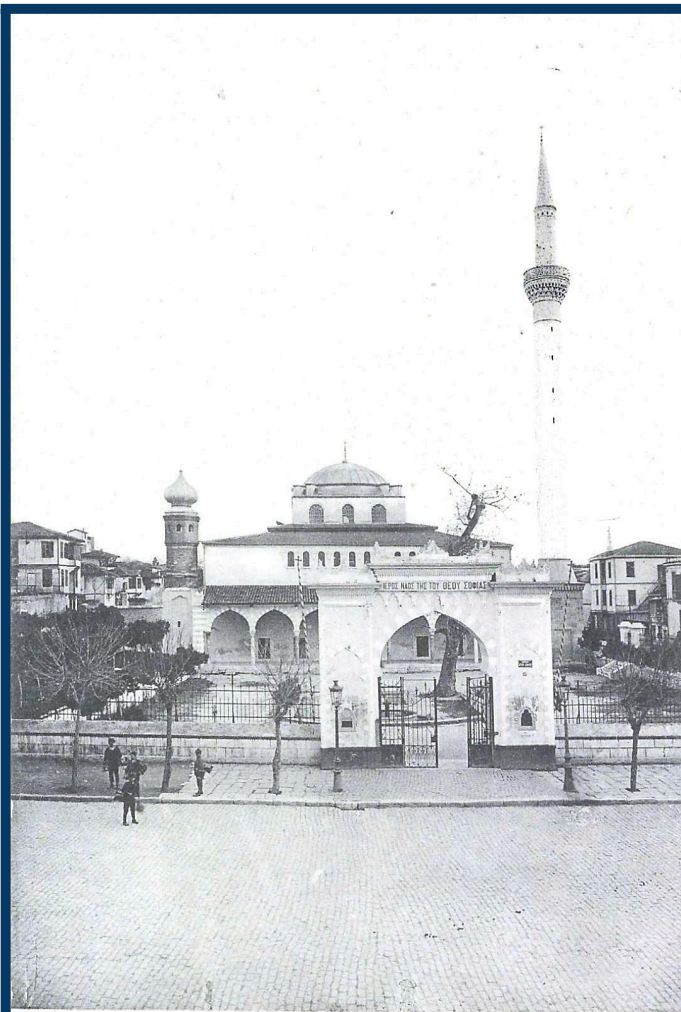




Eglise St.Georges

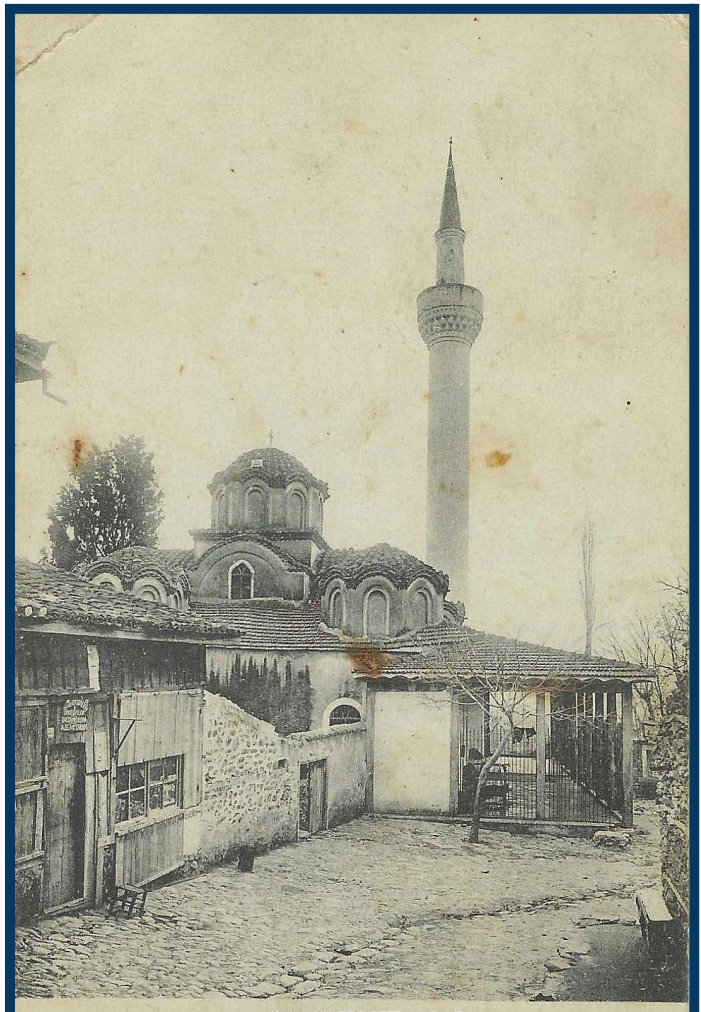


Eglise St.Sophie



SALONIQUE 1916

22. - Malinvaud, Gr.-Imp., Limoges-Lyon



SALONIQUE 1916

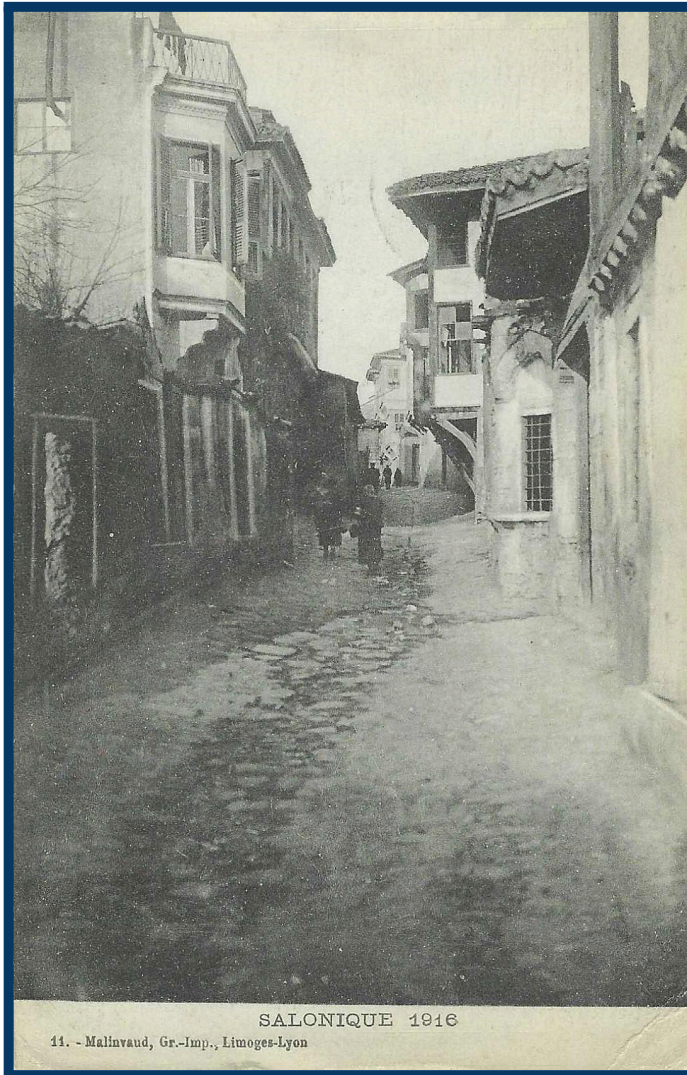
30. - Malinvaud, Gr.-Imp., Limoges-Lyon

Eglise St.Sophie & Eglise St.Apostle

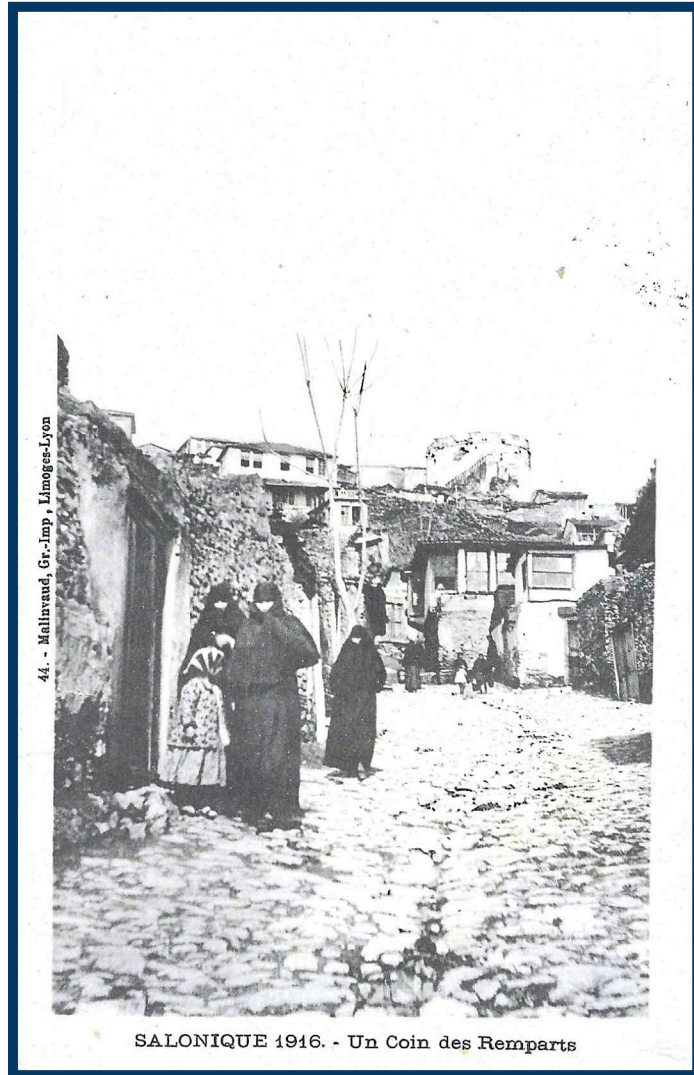


15. - Malinvaud, Gr.-Imp., Limoges-Lyon

SALONIQUE 1916



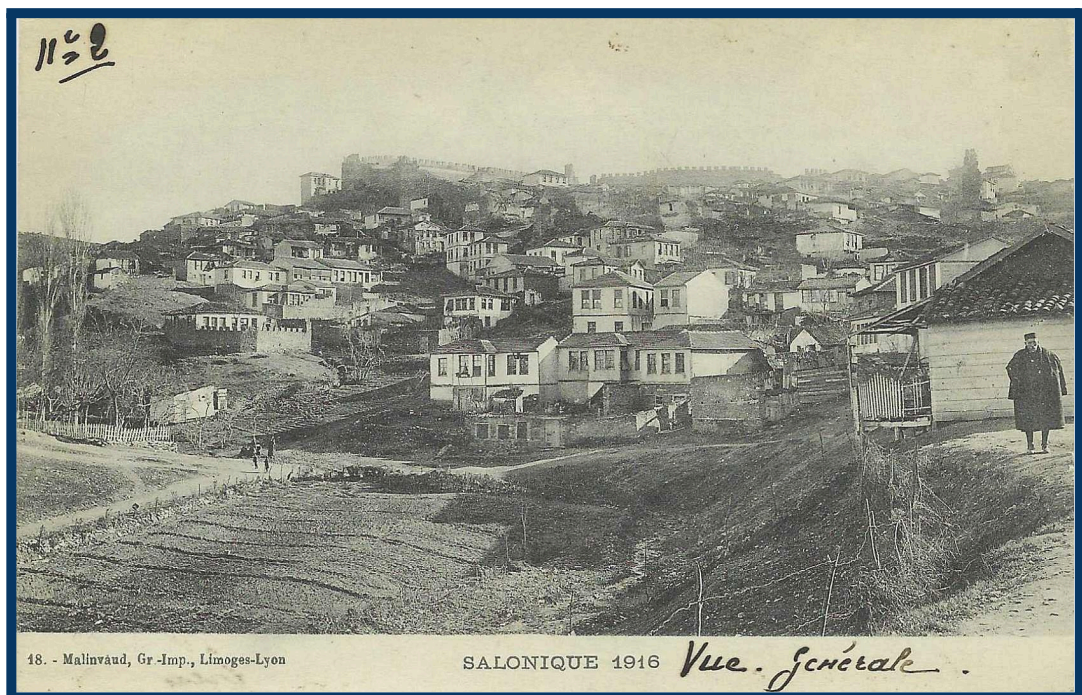
SALONIQUE 1916
11. - Malinvaud, Gr.-Imp., Limoges-Lyon



44. - Malinvaud, Gr.-Imp., Limoges-Lyon

SALONIQUE 1916. - Un Coin des Remparts

Remparts

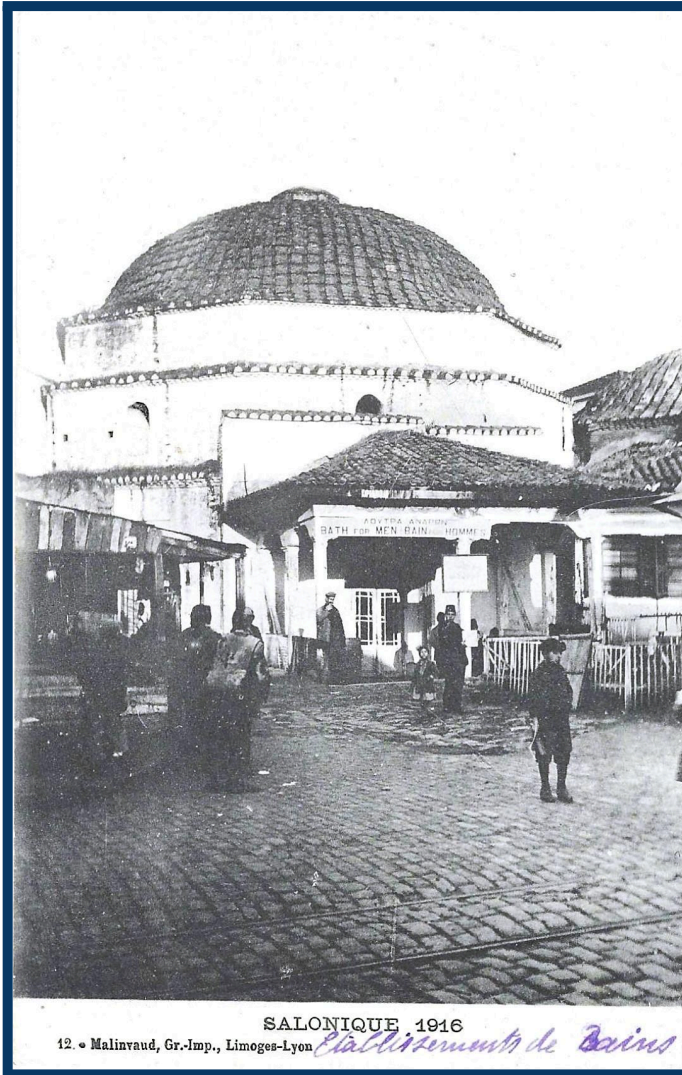


1102

18. - Malinvaud, Gr.-Imp., Limoges-Lyon

SALONIQUE 1916

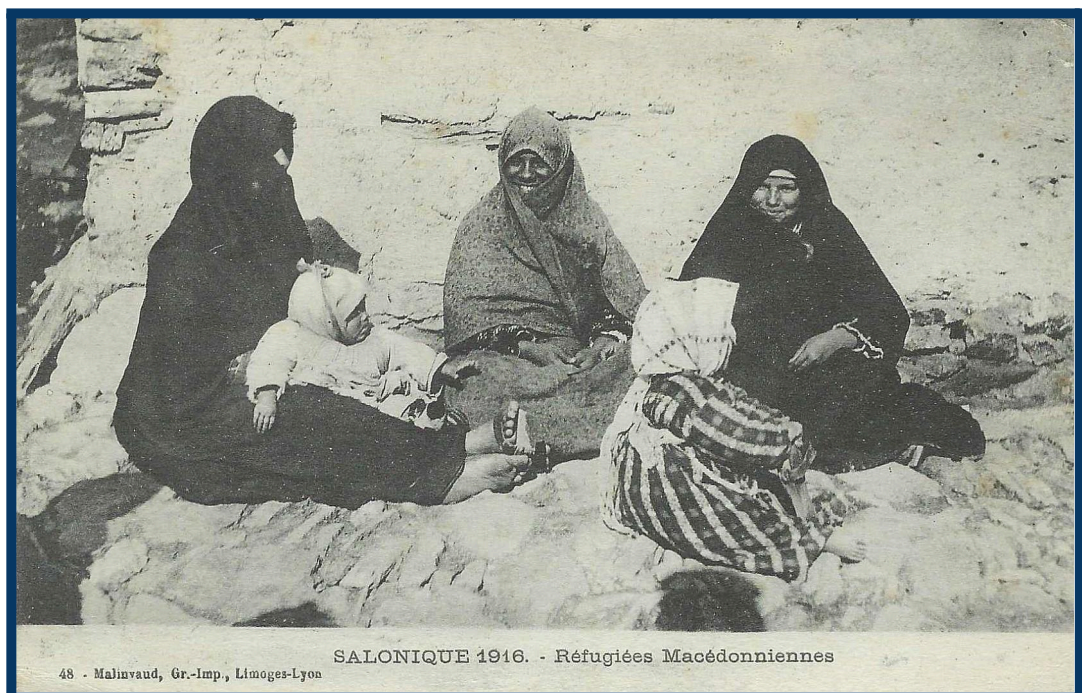
Vue. Générale.



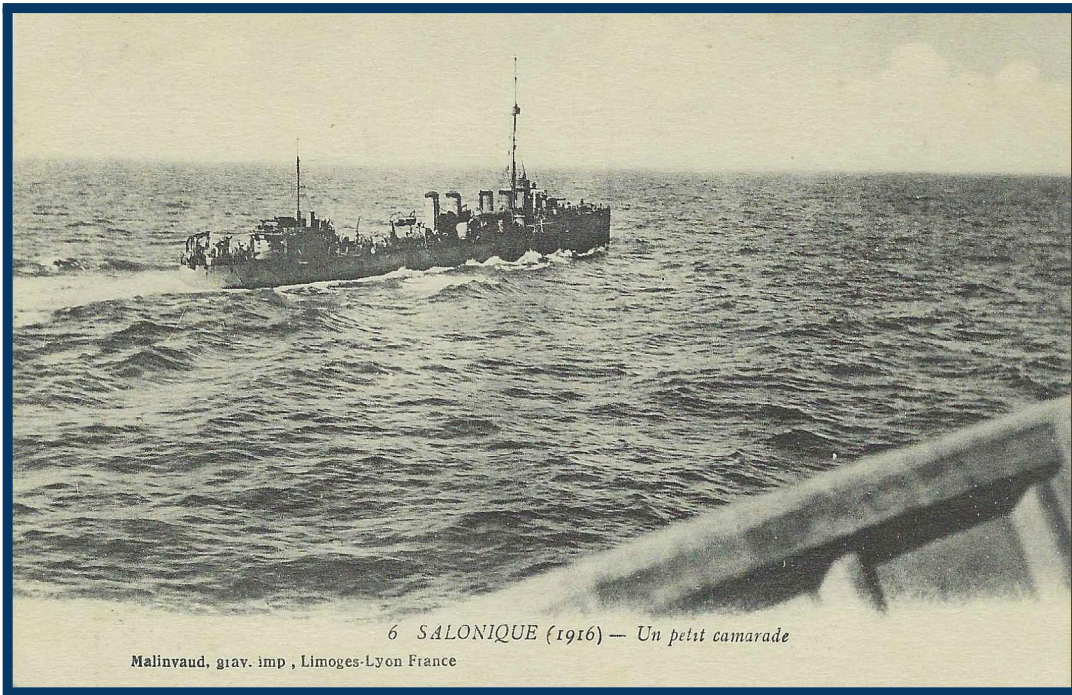
Bains Turcs



Grec (Macédonien)

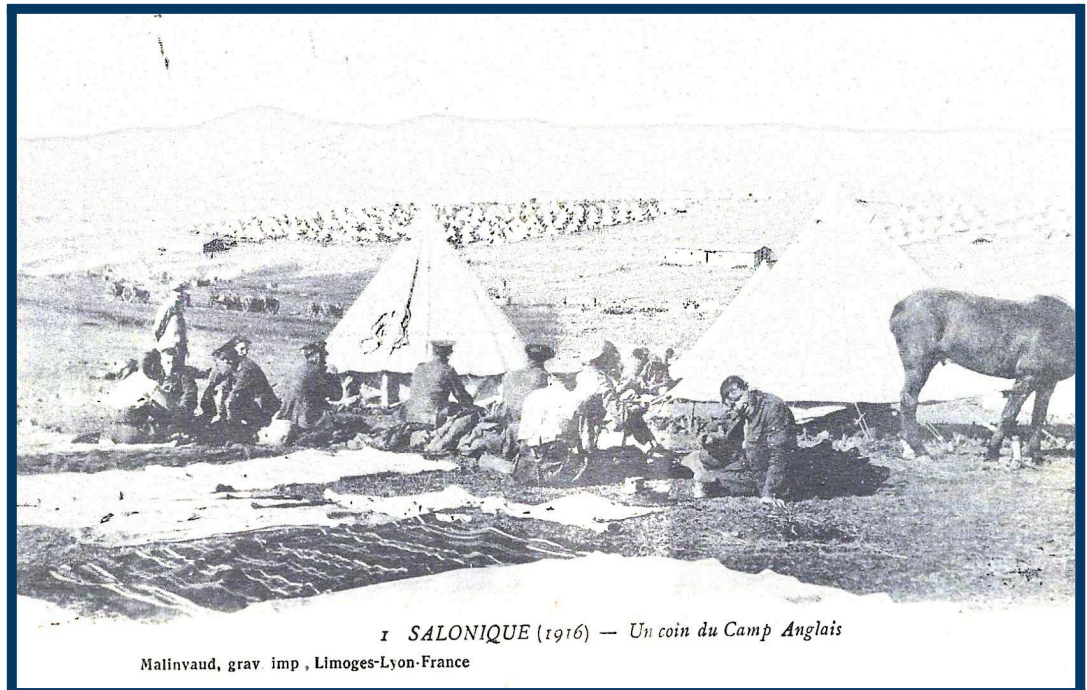


Réfugiées Macédoniennes



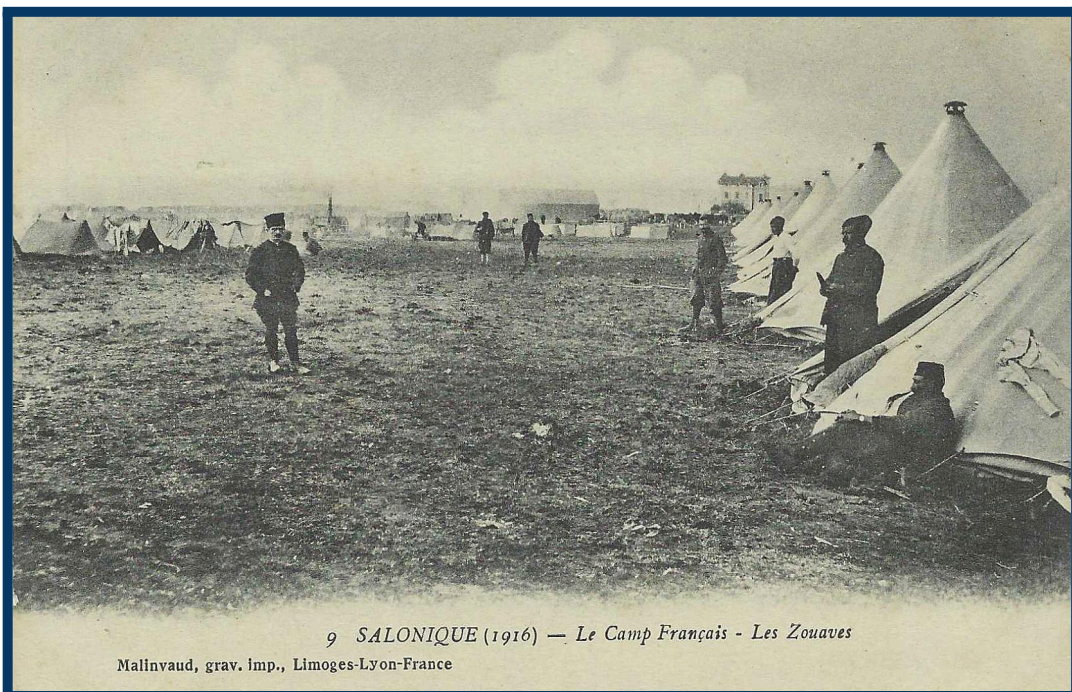
Un camarade

6 SALONIQUE (1916) — Un petit camarade
Malinvaud, grav. imp., Limoges-Lyon France



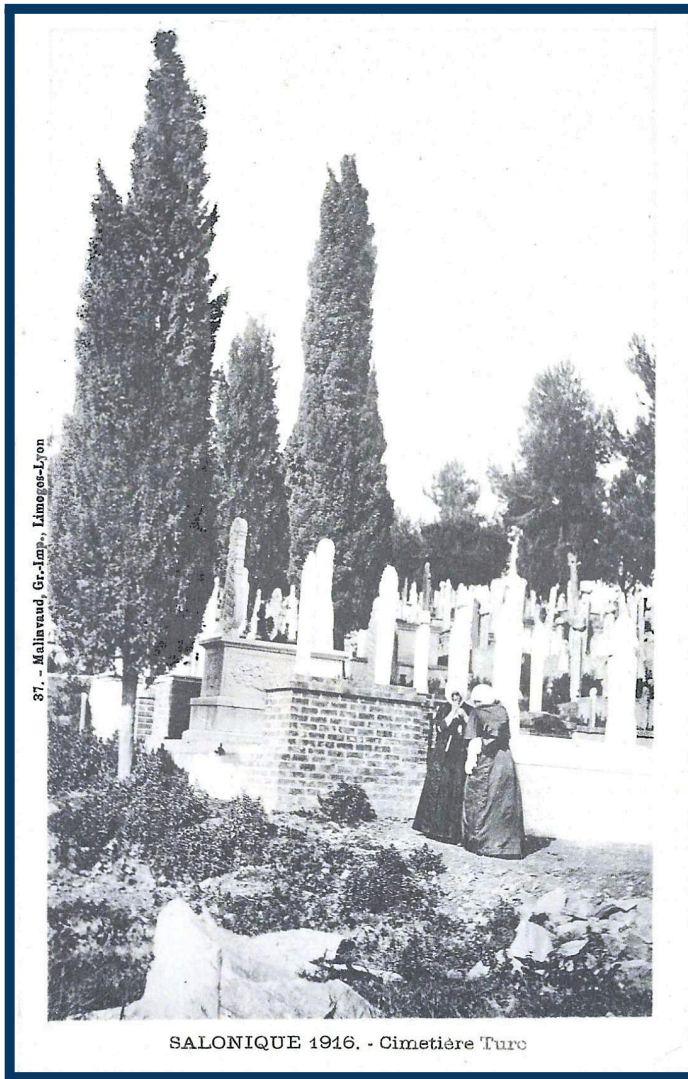
Le Camp Anglais

7 SALONIQUE (1916) — Un coin du Camp Anglais
Malinvaud, grav. imp., Limoges-Lyon-France

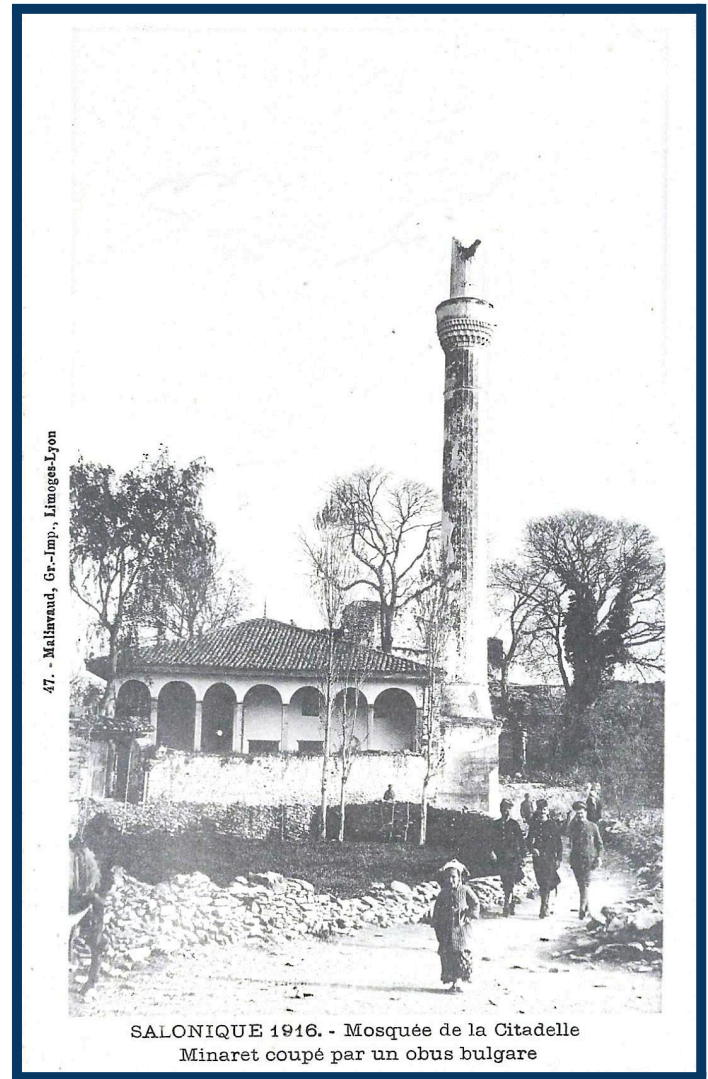


Le Camp Français

9 SALONIQUE (1916) — Le Camp Français - Les Zouaves
Malinvaud, grav. imp., Limoges-Lyon-France



Cimetière Turc



Mosquée de la Citadelle



Travailleurs Macédoniens



Place de la Liberté

Place de la Liberté et rue Vénizelos
14. - Malinvaud, Gr.-Imp., Limoges-Lyon SALONIQUE 1916



Arc de Galère

17. - Malinvaud, Gr.-Imp., Limoges-Lyon

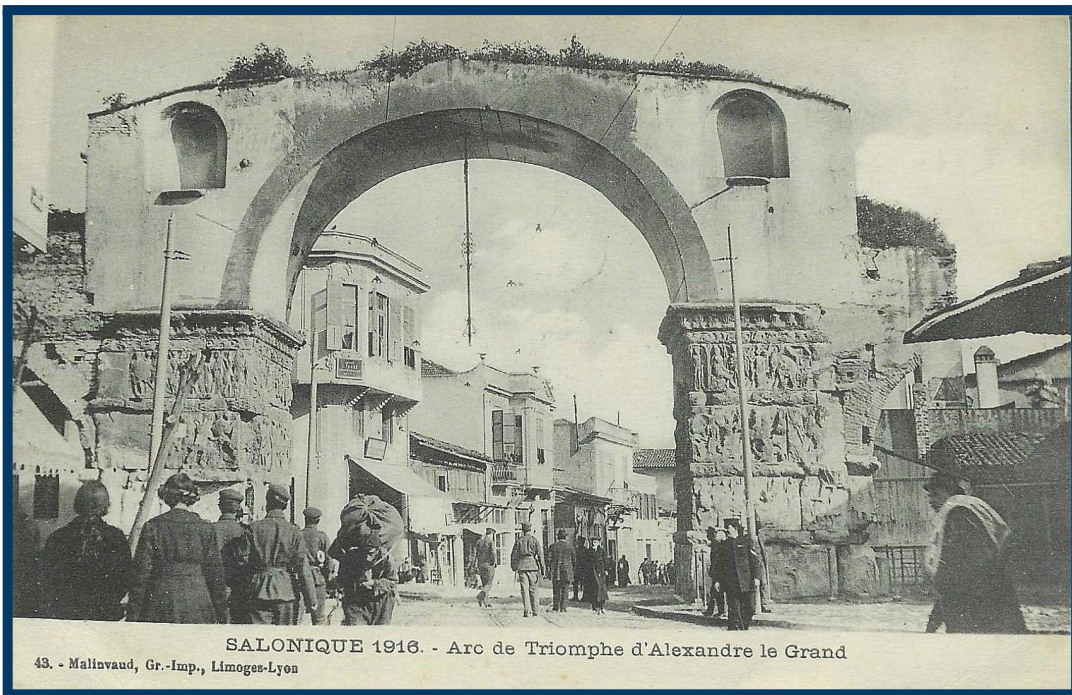
SALONIQUE 1916



Cireurs au
Boulevard du Roi
Constantin

13. - Malinvaud, Gr.-Imp., Limoges-Lyon

SALONIQUE 1916



Arc de Triomphe
d'Alexandre le Grand

La Préfecture



SALONIQUE 1916

Préfecture

29. - Malinvaud, Gr.-Imp., Limoges-Lyon

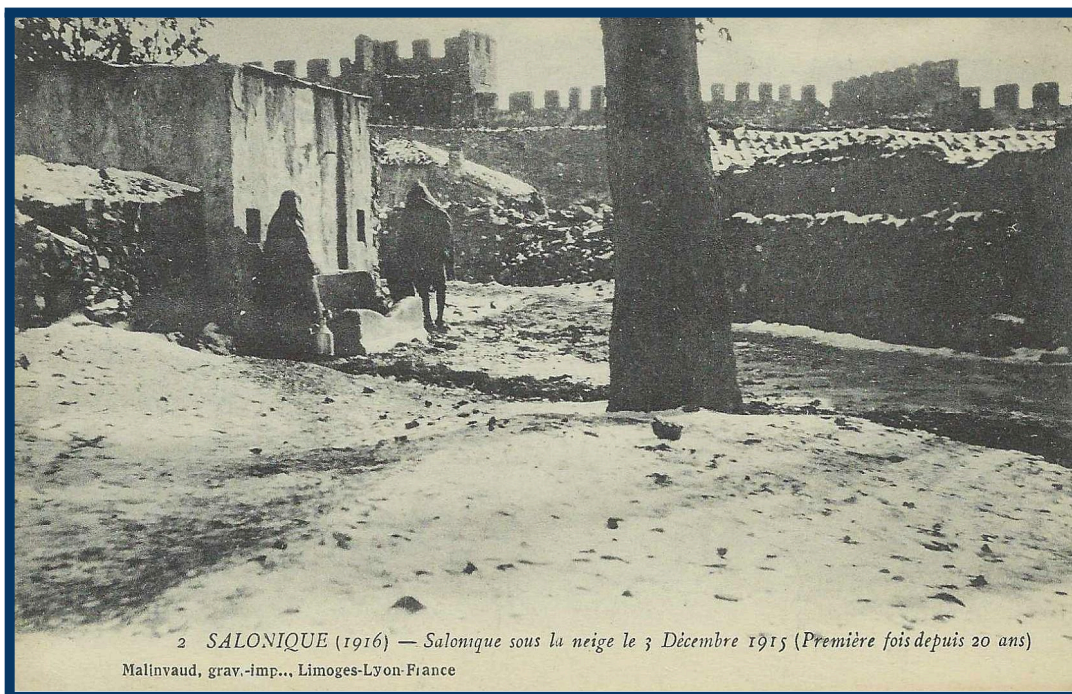
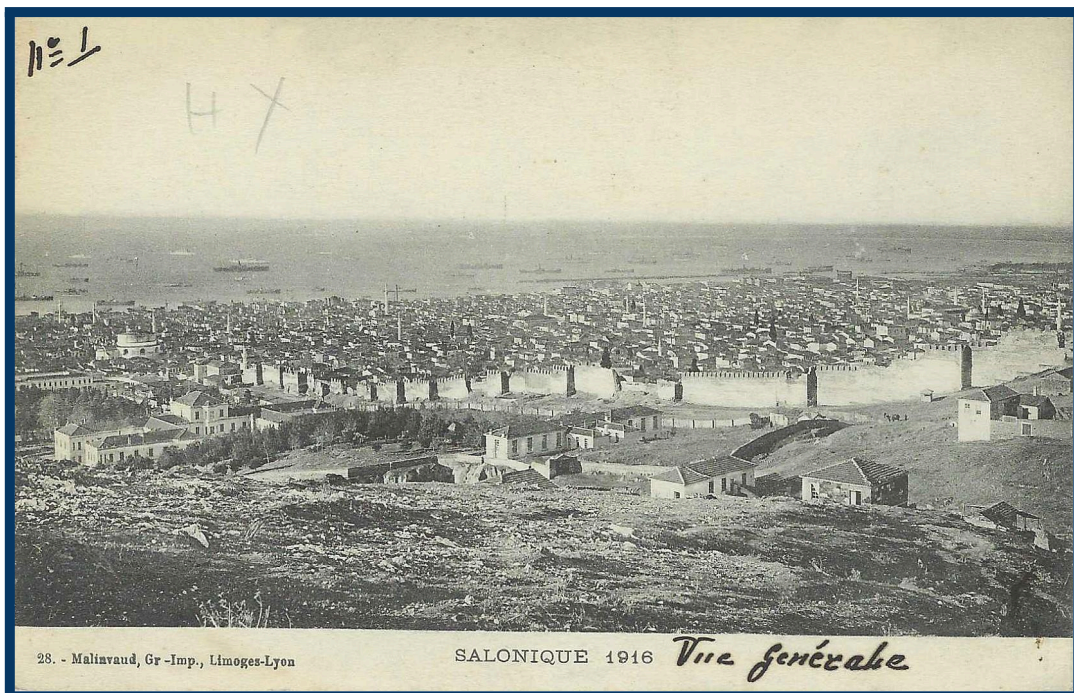


Orphelinat Grec

SALONIQUE 1916

Orphelinat Grec

27. - Malinvaud, Gr.-Imp., Limoges-Lyon



Salonique sous
la neige pour
la première
fois après 20 ans

Monastère près
des Remparts

