

Neurdein et Cie was a French publishing company founded by Etienne Neurdein (1832-1918).  
Circa 1885 joined by his brother Antonin Neurdein (1846-1914). Used the monogram, ND.

During WWI, followed the French army at the Macedonian Front. Obtained 63 different clichés of Salonique & 5 clichés of Mount Athos. Issued a series of Salonique Cartes Postales numbered from 1 to 69.  
The last 5 were concerning Mount Athos

Postcards were issued in the beginning only in French.  
The second issue was bilingual in French and English. Later Italian added too.  
They used greenish & white cardboard. Last issues were color coated.

Postcards were sold in Carnets of 12 or 24 and in envelopes.

**View of Salonique**

**The White Tower**

**The Old & High town**

**The Citadel**

**St.Sophie - Twelve Apostles - Vlateon Monastery**

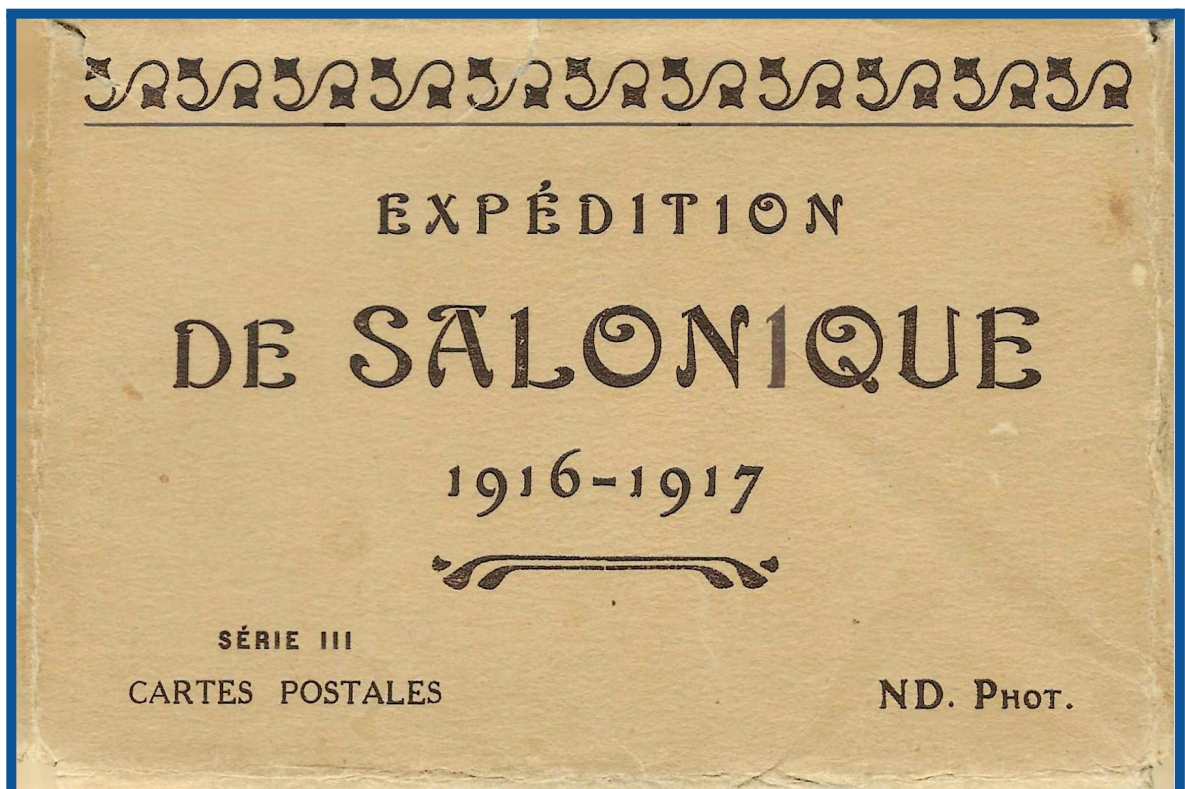
**St.Demetrius - Prophete Elie - Nicolas Orphanos**

**Archangels - Eski Djouma - St.George**

**St.Panteleimon - Theotokos - St.Catherine**

**Roman Tomb**

**Mount Athos**



## The Descriptions

1. View taken from Kara-Bournou Cape
2. The White Tower
3. The Old Town
4. The High Town, the Acropole Bulwarks
5. The High Town, a great way off, the Vardar place
6. The High Town
7. The High Town, the Acropole Bulwarks
8. View of the Bulwarks at the East
9. The Citadel
10. The Citadel
11. The Bulwarks (North)
12. The Bulwarks (East)
13. The Bulwarks (East)
14. The Bulwarks at the East and the Chain Tower
15. The Bulwarks (North West)
16. The Bulwarks (South East)
17. St.Sophie church
18. St.Sophie church (North West)
19. St.Sophie church. Inside the nave (West side)
20. Inside the St.Sophie church
21. Inside the St.Sophie church
22. Inside the St.Sophie church
23. St.Sophie church low column north side
24. Inside the St.Sophie church
25. St.Sophie church (Galleries)
26. St.Sophie church Musulman colonade
27. St.Sophie church (Apsis)
28. Roman grave near St.Sophie
29. The church of the Twelve Apostles
30. Prophet Elie's church
31. The church of the Twelve Apostles (Apsis)
32. Inside of the Twelve Apostles church
33. Vlateon Moni church
34. Vlateon Moni church
35. Vlateon Moni church (Apsis)
36. Vlateon Moni
37. Convent of the Vlateon (Vlateon Moni Iconostase)
38. The Convent of the Vlateon

## The Descriptions

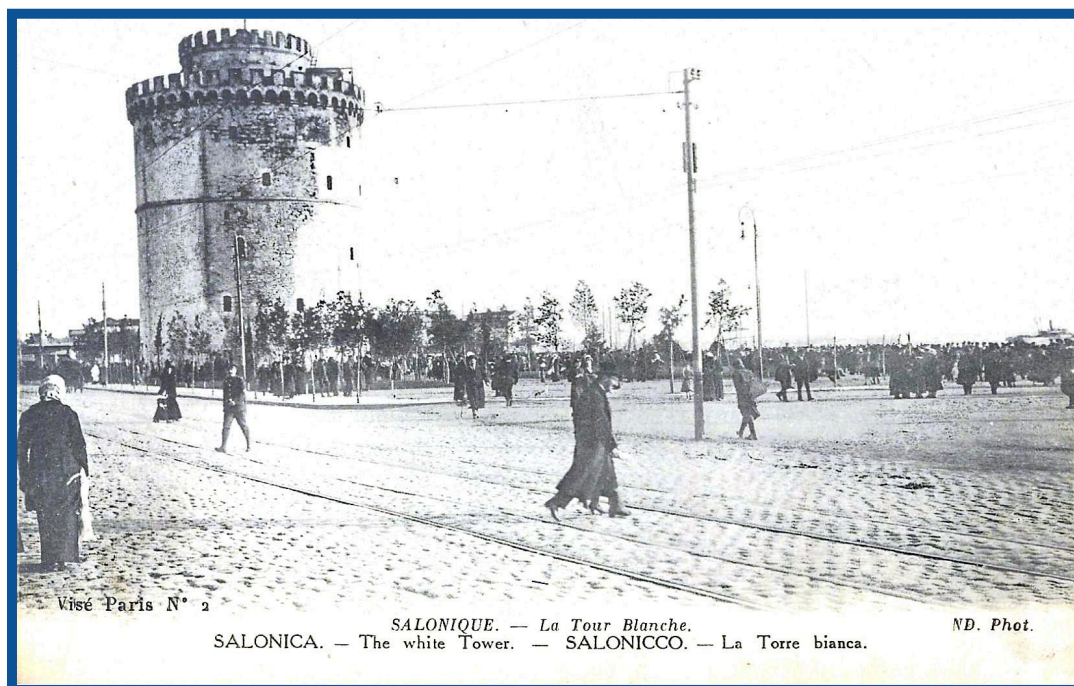
39. The street and the St.Demetrius church
40. St.Demetrius church (Nave)
41. Inside of St.Demetrius church
42. St.Demetrius church (Chapiters)
43. St.Demetrius church. Chapiters of the Nave
44. St.Demetrius church mosaics
45. St.Demetrius church (Apsis)
46. St.Demetrius church (Apsis)
47. Demetrius church (Apsis)
48. The Prophet Elie church
49. Prophet Elie church
50. The Prophet Elie church
51. The Prophet Elie church
52. Prophet Elie church (South cross-bar)
53. St.Nicolas Orphanos church (Apsis)
54. Inside of St.Nicolas Orphanos church
55. Sts.Archangels church
56. Sts.Archangels church (Apsis)
57. Eski-Djouma church (Apsis)
58. Eski-Djouma church Chapiters and mosaics
59. St.Panteleimon church
60. St.George church
61. St.George church
62. St.Catherine church
63. St.Theotocos church (Apsis)
64. ?
65. Western part of the Athos peninsula
66. Athos mount (Height 6778 ft)
67. Athos peninsula, Xenoph Convent
68. Athos peninsula, St.Panteleimon Russian Convent
69. Athos peninsula, Chilandaro Convent







View from Kara-Bournou Cape

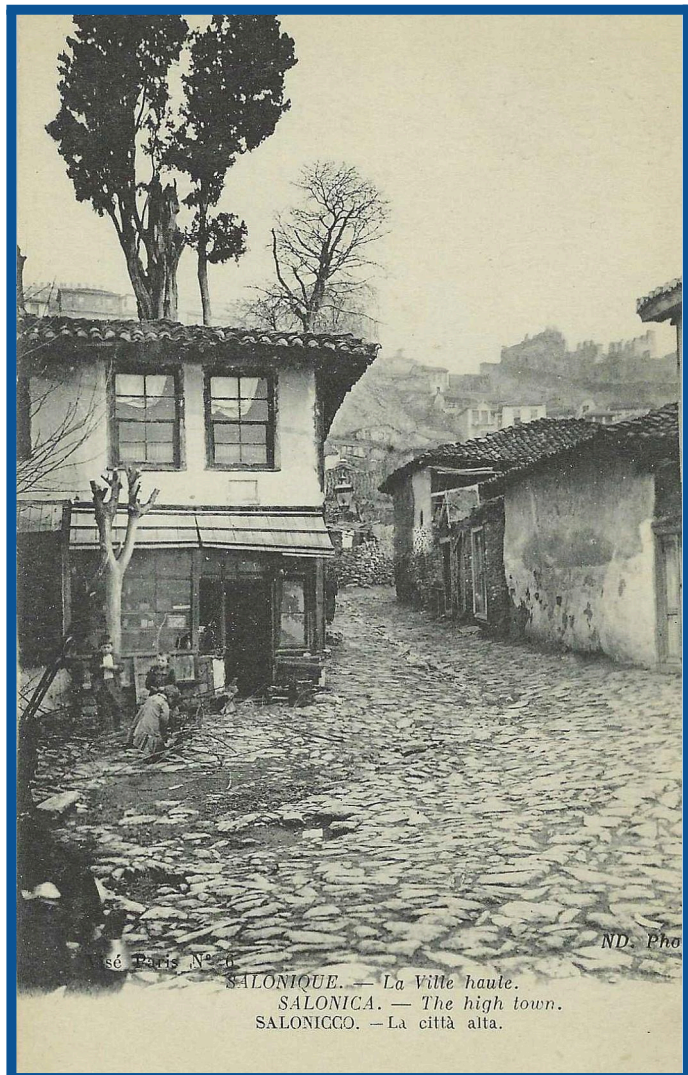


The White Tower





The old town

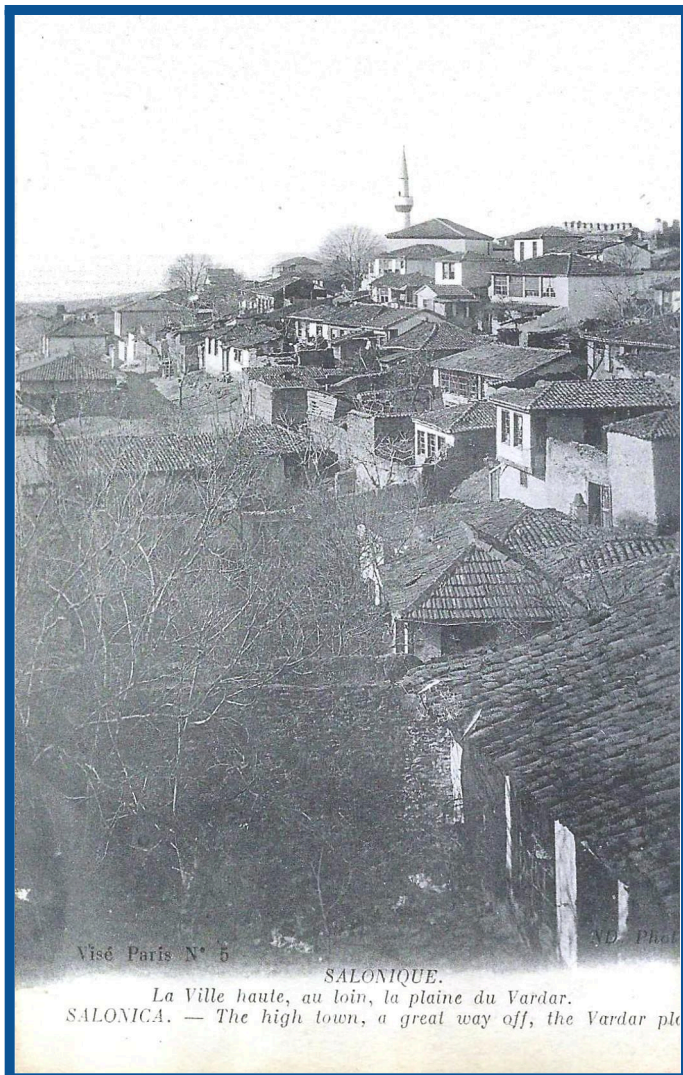


The hight town



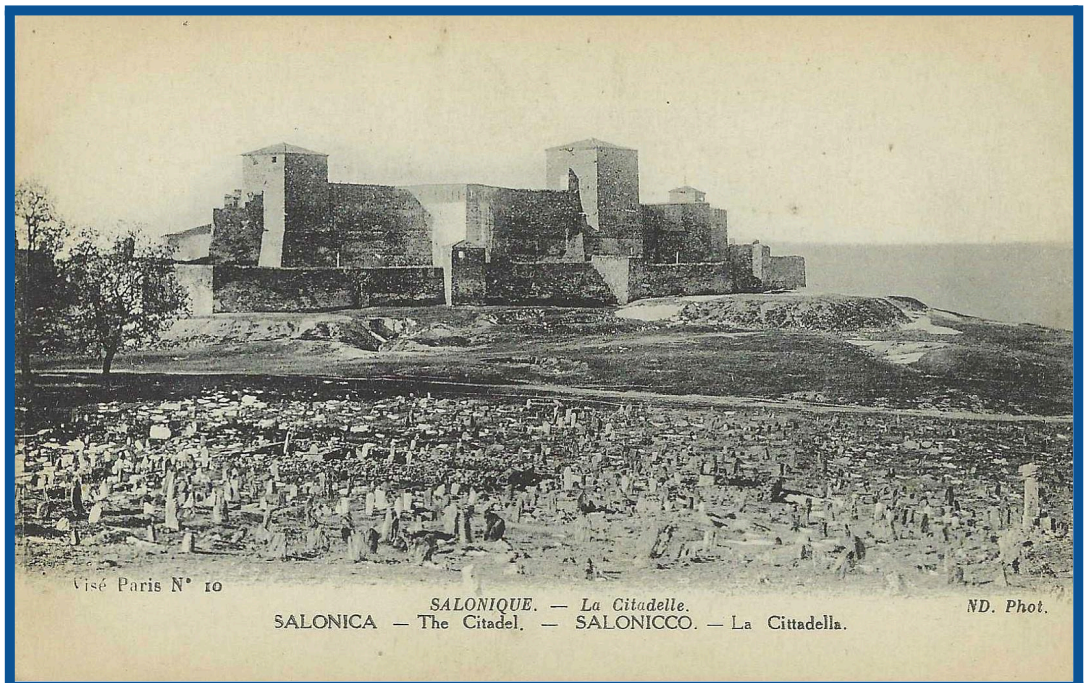


The high town

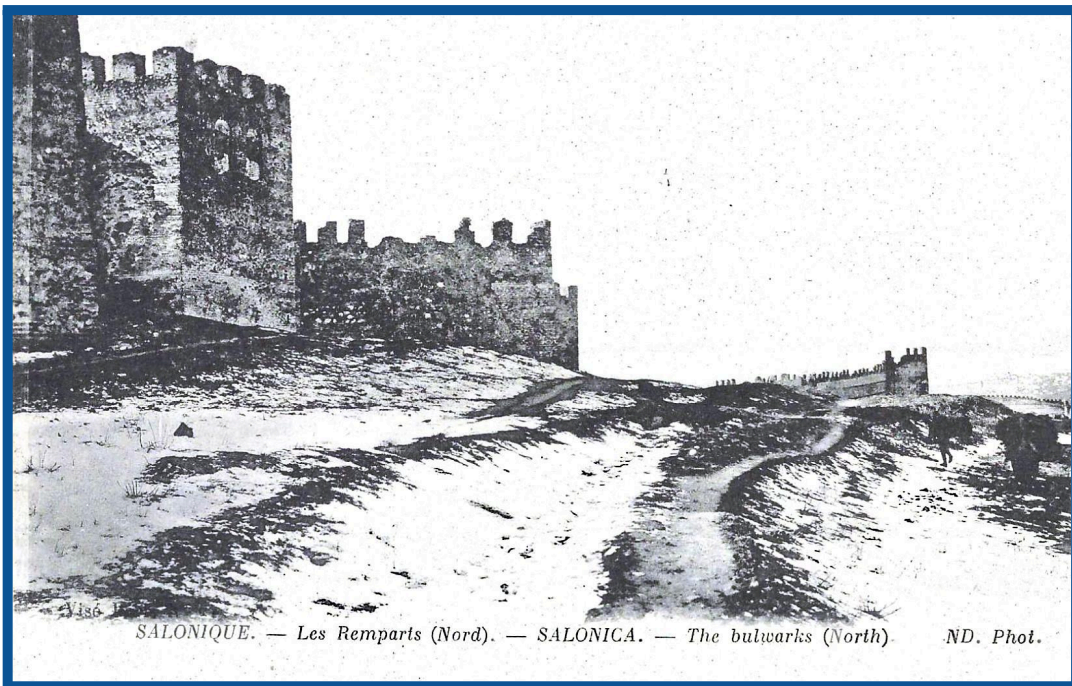




The Citadel

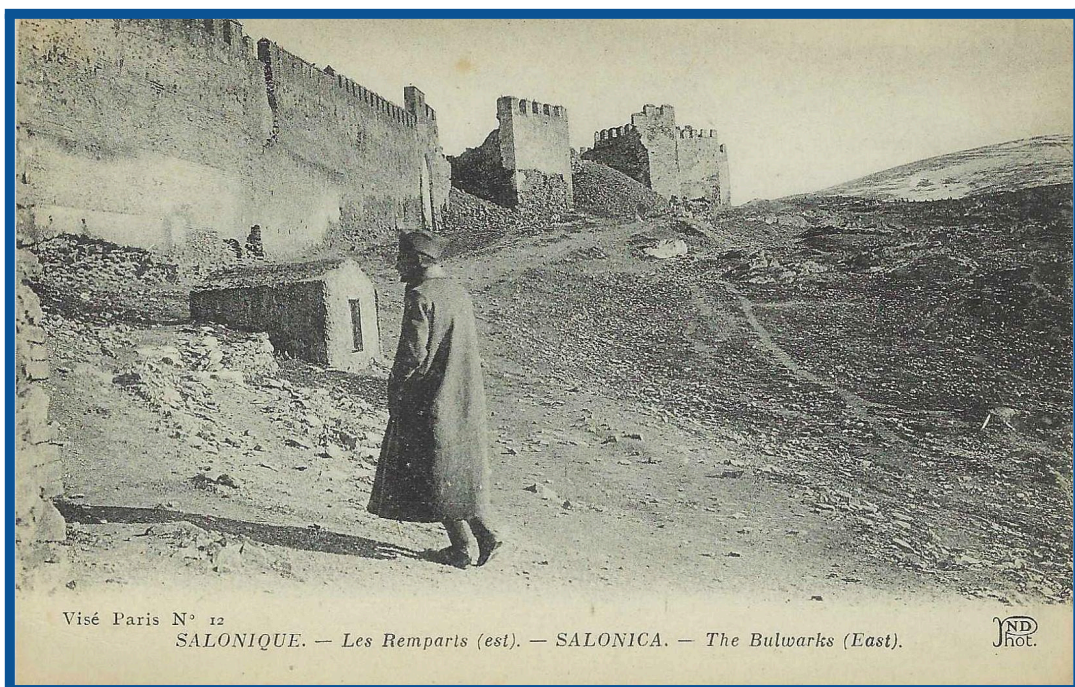






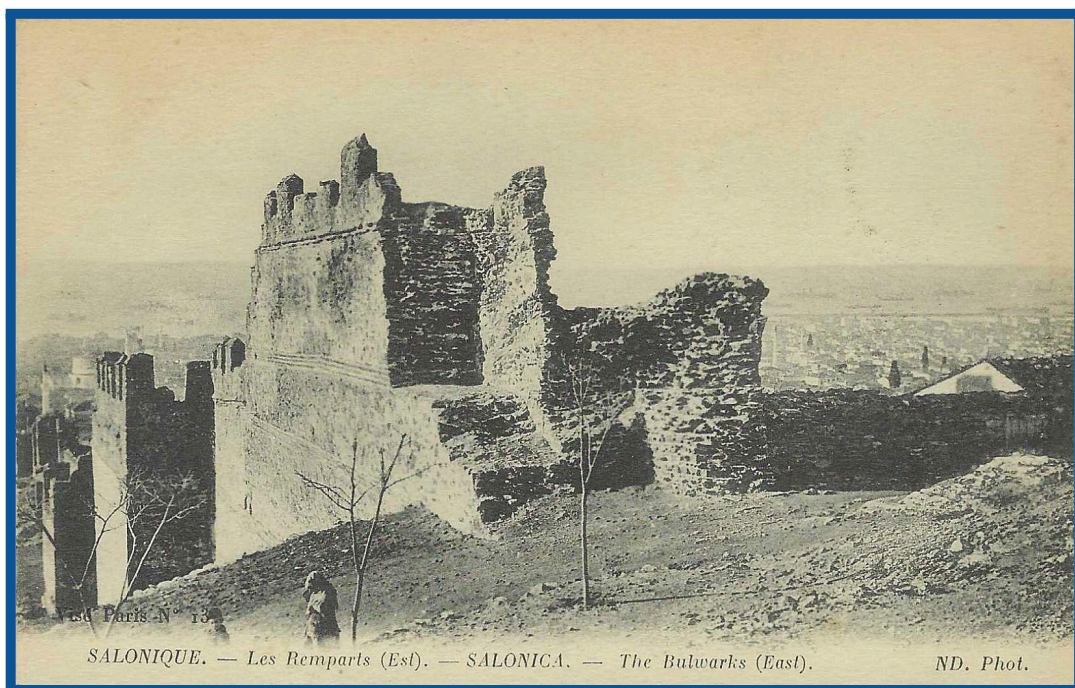
The Citadel

Visé Paris N° 11  
SALONIQUE. — Les Remparts (Nord). — SALONICA. — The bulwarks (North). ND. Phot.



Visé Paris N° 12  
SALONIQUE. — Les Remparts (est). — SALONICA. — The Bulwarks (East).

ND  
Phot.

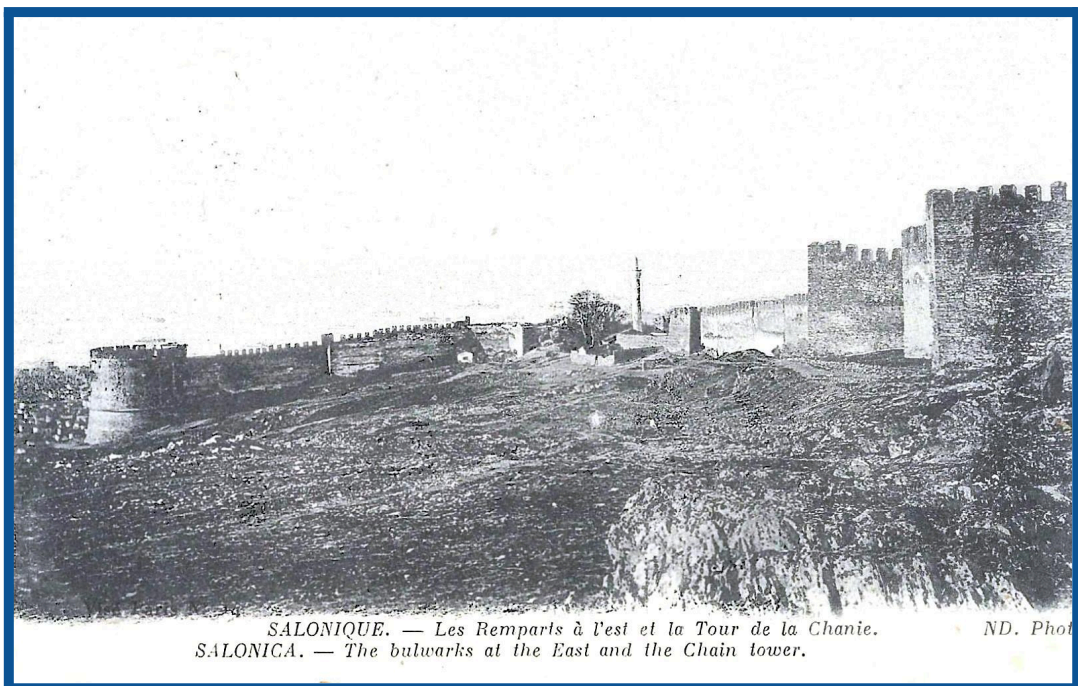


Visé Paris N° 13  
SALONIQUE. — Les Remparts (Est). — SALONICA. — The Bulwarks (East).

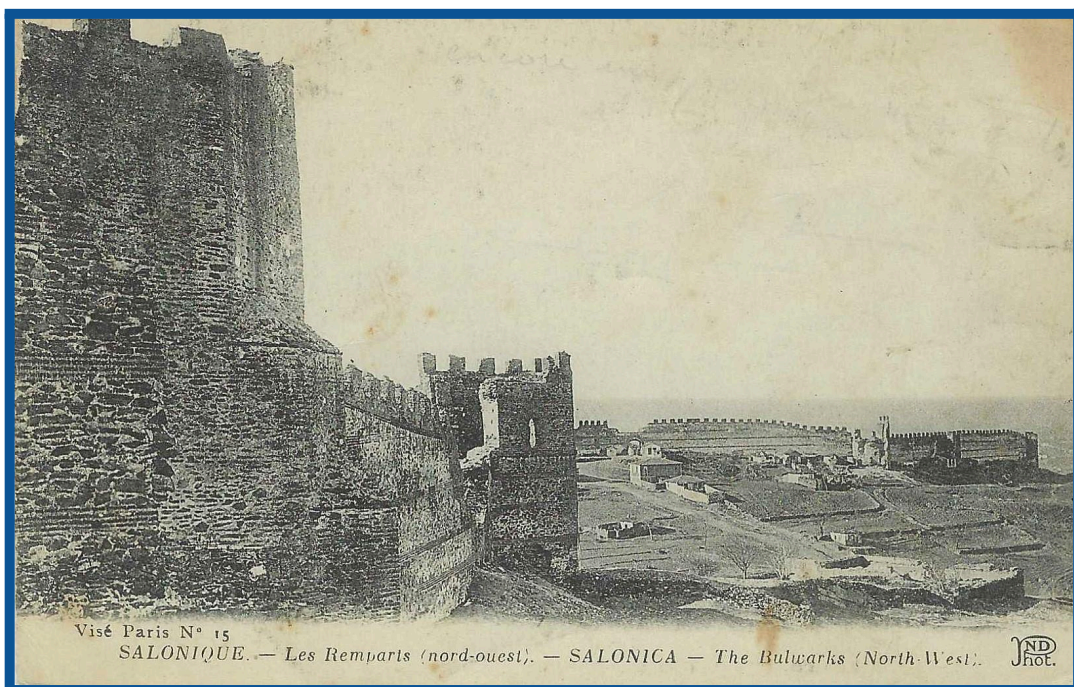
ND. Phot.



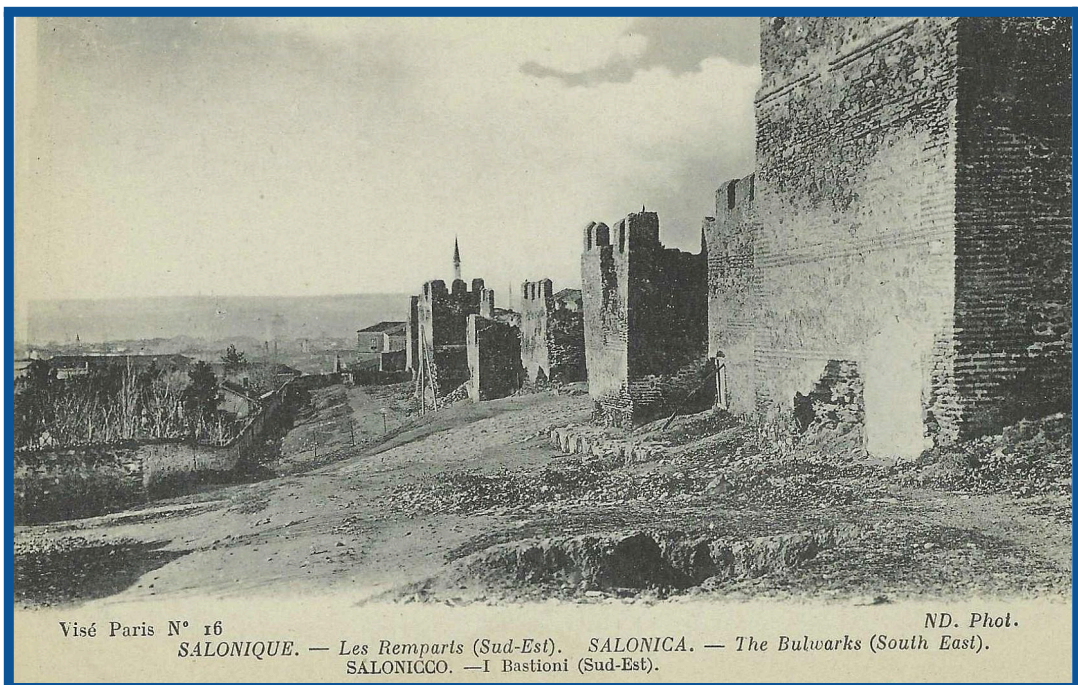
The Citadel



SALONIQUE. — Les Remparts à l'est et la Tour de la Chanie. ND. Phot.  
SALONICA. — The bulwarks at the East and the Chain tower.

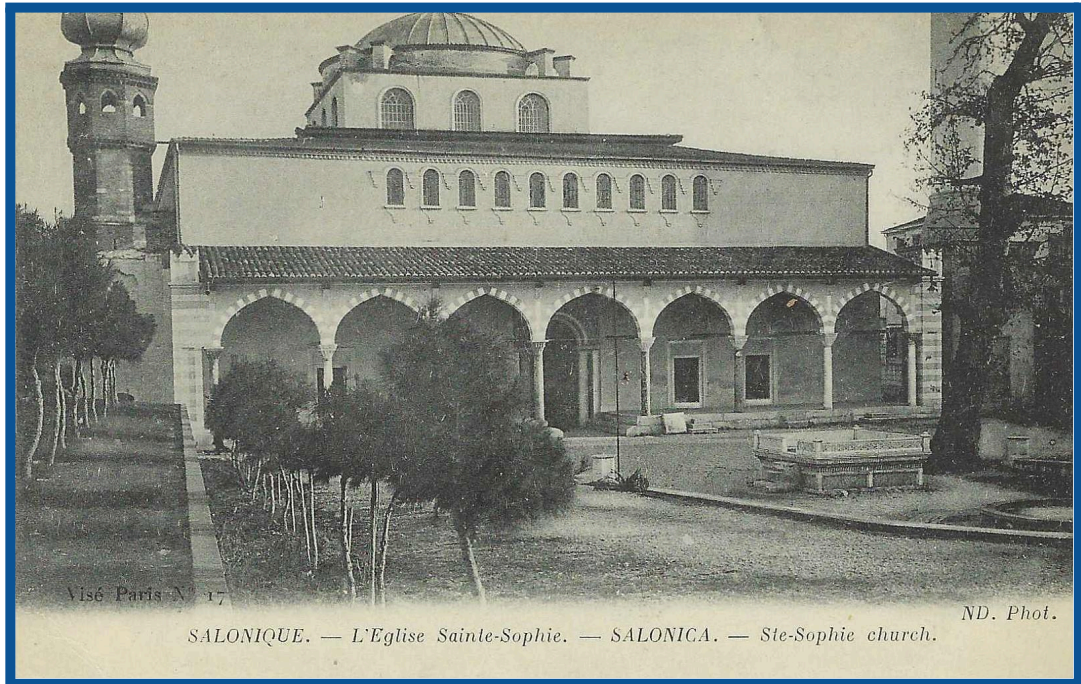


Visé Paris N° 15  
SALONIQUE. — Les Remparts (nord-ouest). — SALONICA — The Bulwarks (North-West). ND Phot.



Visé Paris N° 16  
SALONIQUE. — Les Remparts (Sud-Est). SALONICA. — The Bulwarks (South East). ND. Phot.  
SALONICCO. — I Bastioni (Sud-Est).



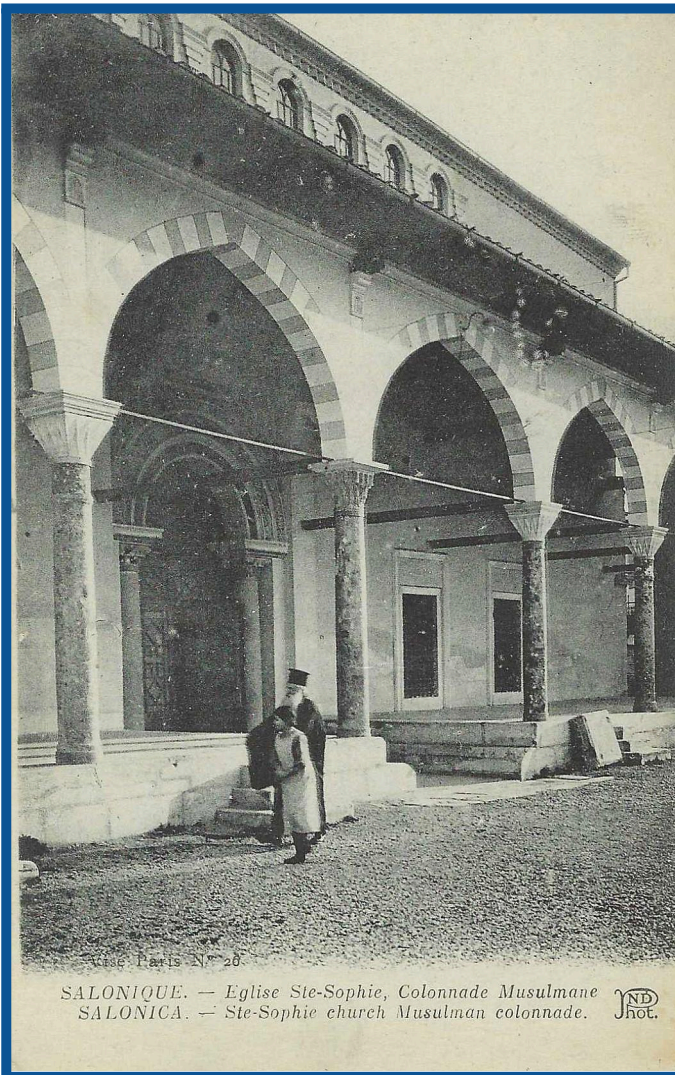


Visé Paris N° 17


ND. Phot.

SALONIQUE. — L'Eglise Sainte-Sophie. — SALONICA. — Ste-Sophie church.

### St.Sophia church



Visé Paris N° 20

SALONIQUE. — Eglise Ste-Sophie, Colonnade Musulmane  
SALONICA. — Ste-Sophie church Musulman colonnade. 



ND. Phot.

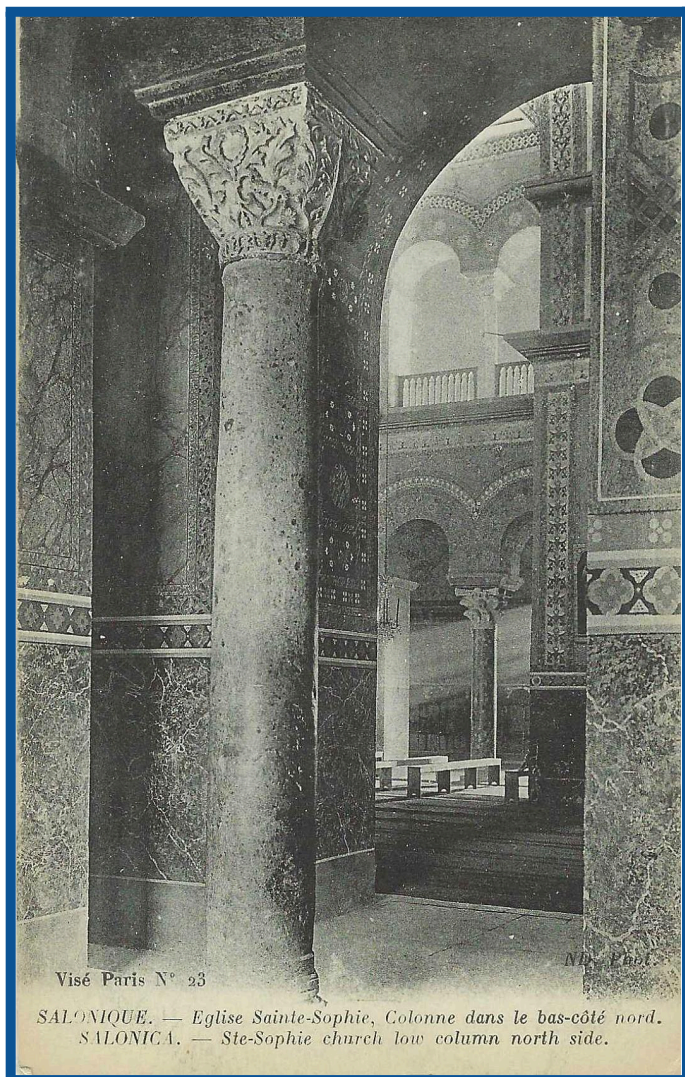
Visé Paris N° 18  
SALONIQUE. — Eglise Ste-Sophie (nord-ouest).  
SALONICA. — Ste-Sophie church (North-West).



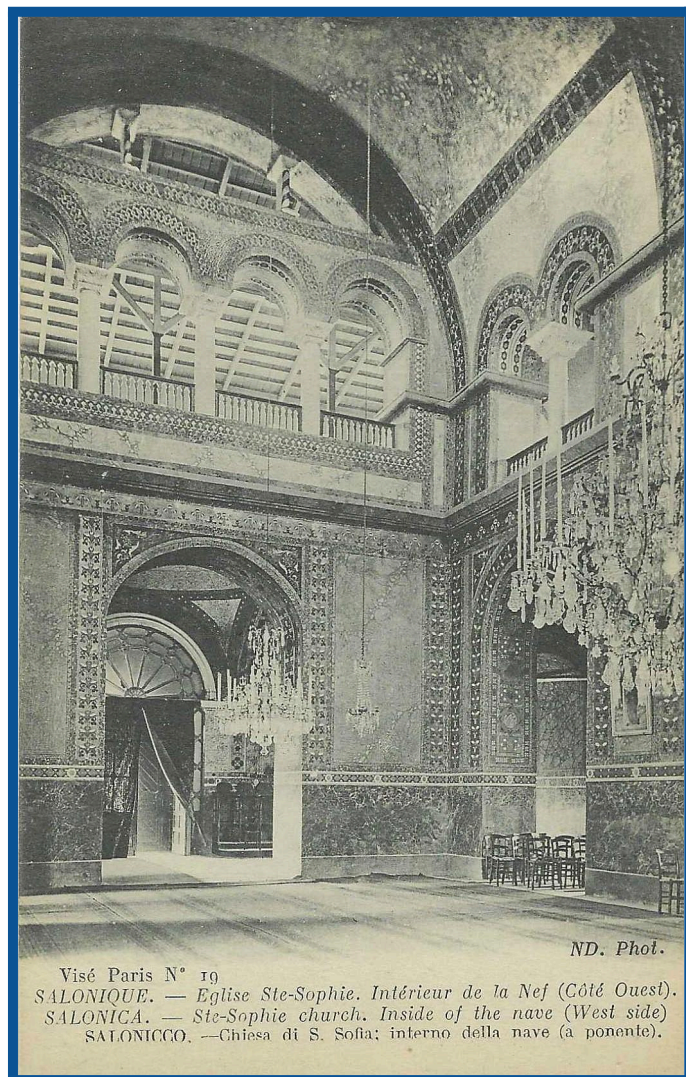


SALONIQUE. — Eglise Sainte-Sophie, le Chevet. ND. Phot.  
SALONICA. — Ste-Sophie church (Apsis). — Chiesa di S. Sofia; il Chevet.

St.Sophia church



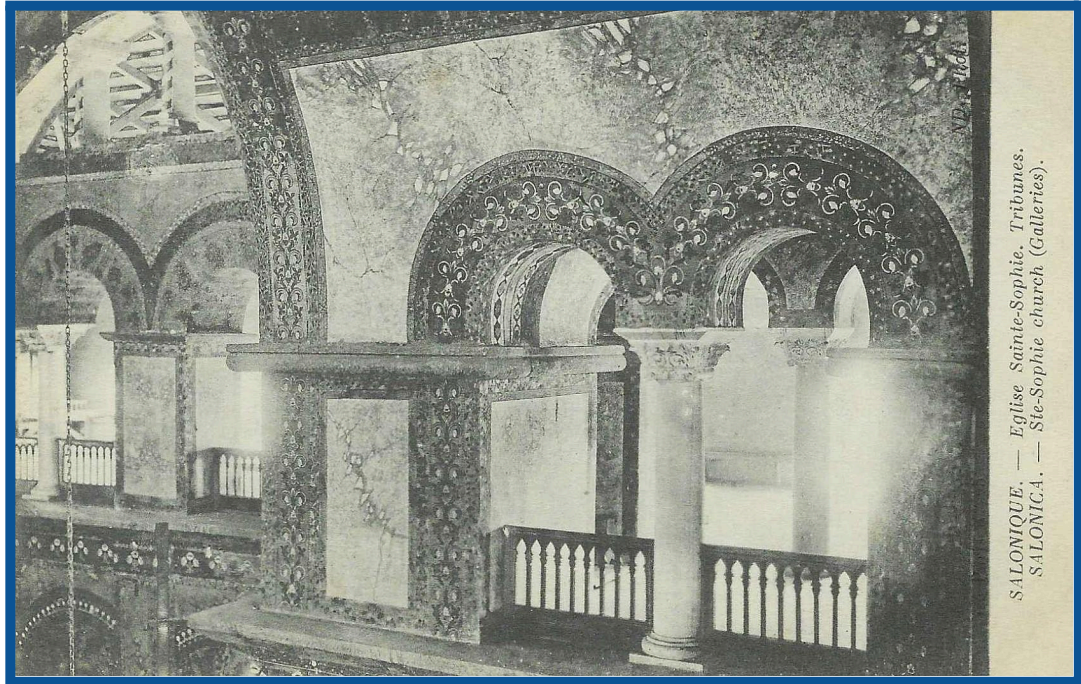
Visé Paris N° 23 ND. Phot.  
SALONIQUE. — Eglise Sainte-Sophie, Colonne dans le bas-côté nord.  
SALONICA. — Ste-Sophie church low column north side.



Visé Paris N° 19 ND. Phot.  
SALONIQUE. — Eglise Ste-Sophie, Intérieur de la Nef (Côté Ouest).  
SALONICA. — Ste-Sophie church, Inside of the nave (West side).  
SALONICCO. — Chiesa di S. Sofia; interno della nave (a ponente).

(interior)





SALONIQUE. — Eglise Sainte-Sophie. Tribunes.  
SALONICA. — Ste-Sophie church (Galleries).

St.Sophia church  
(interior)



Visé Paris N° 21

ND. Phot

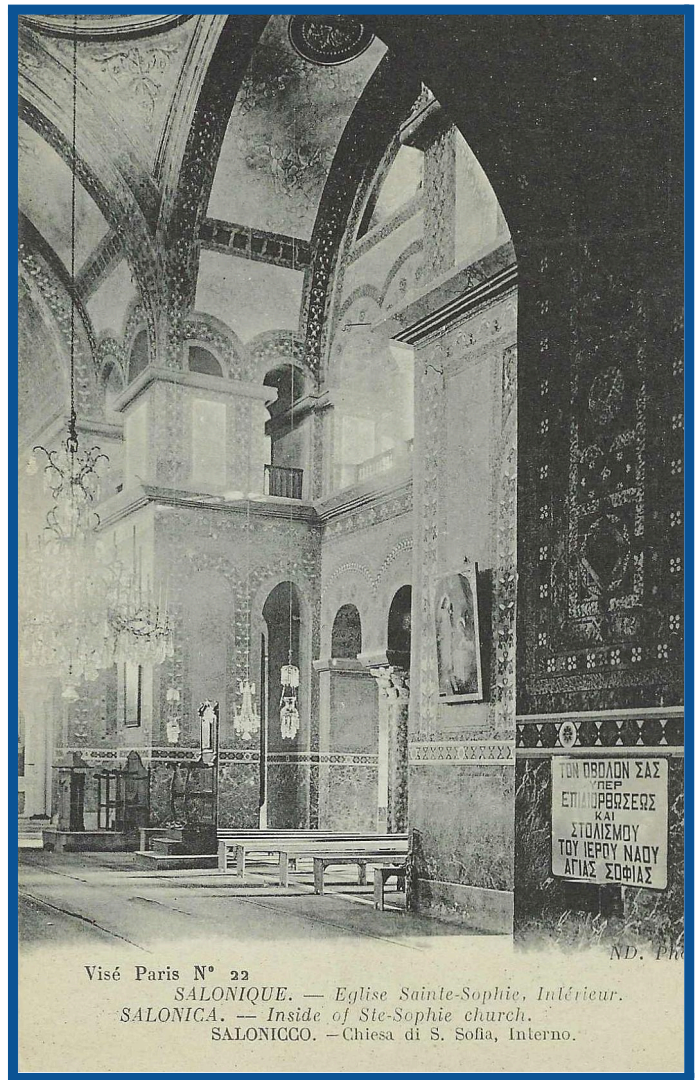
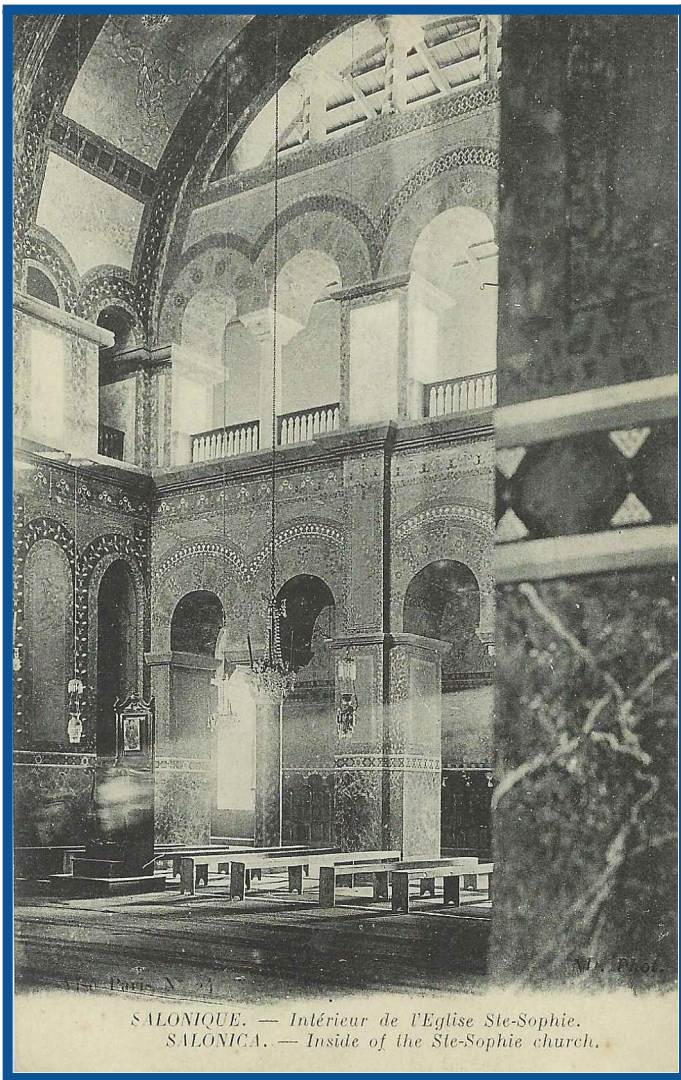
SALONIQUE. — Intérieur de l'Eglise Sainte-Sophie.  
SALONICA. — Inside of Ste-Sophie church.



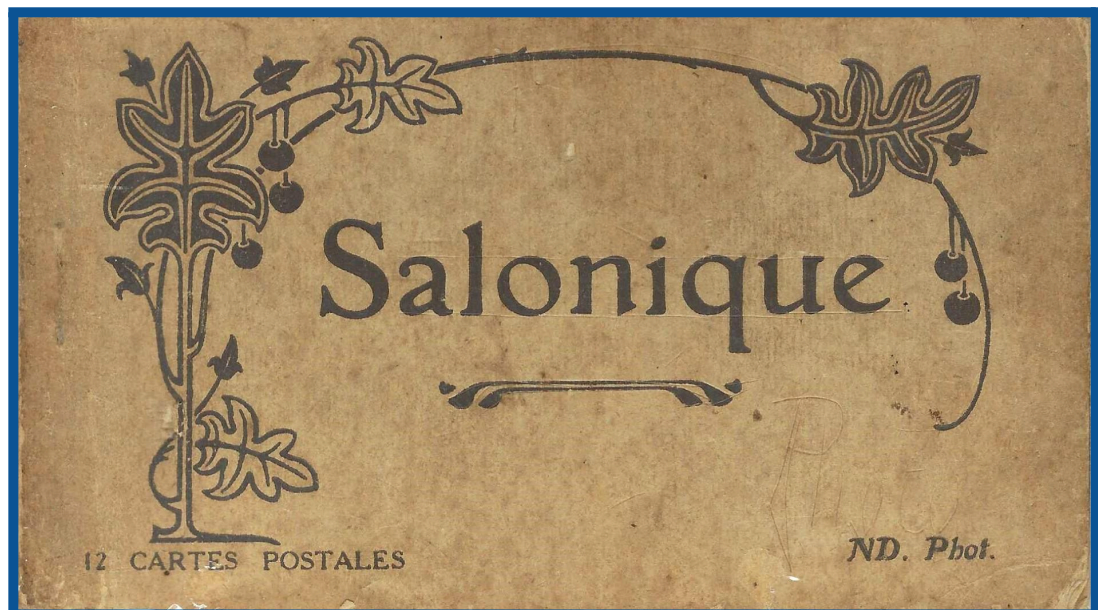
Visé Paris N° 20

SALONIQUE. — Eglise Ste-Sophie, intérieur.  
SALONICA. — Inside of Ste Sophie church.  
SALONICCO. — Chiesa di S. Sofia; interno.





St.Sophia church  
(interior)

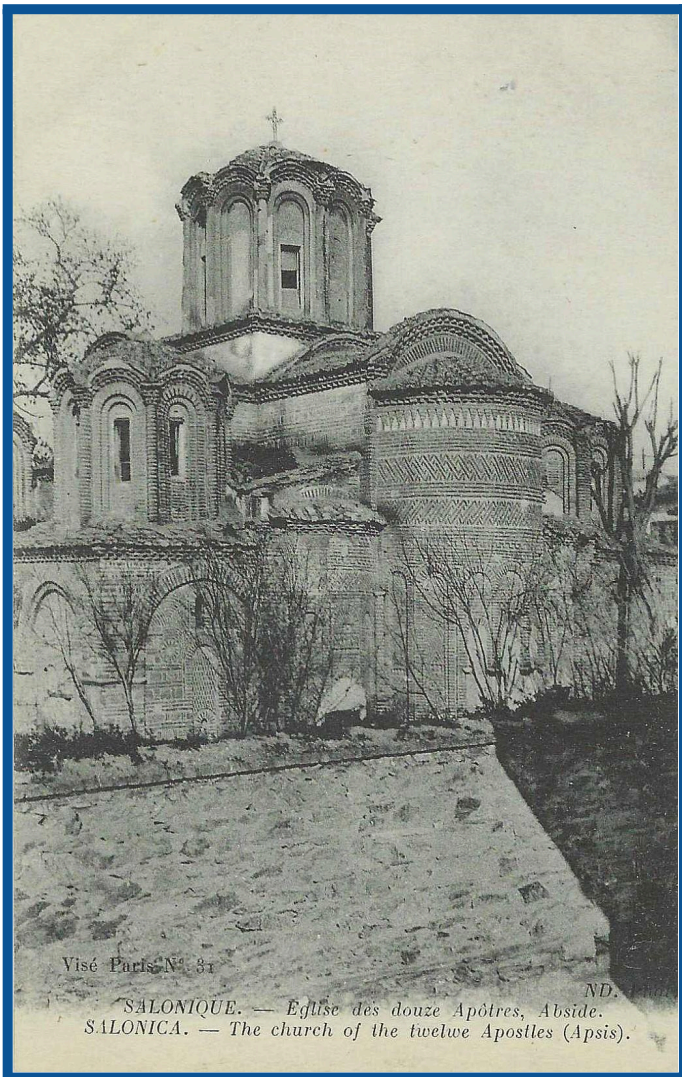




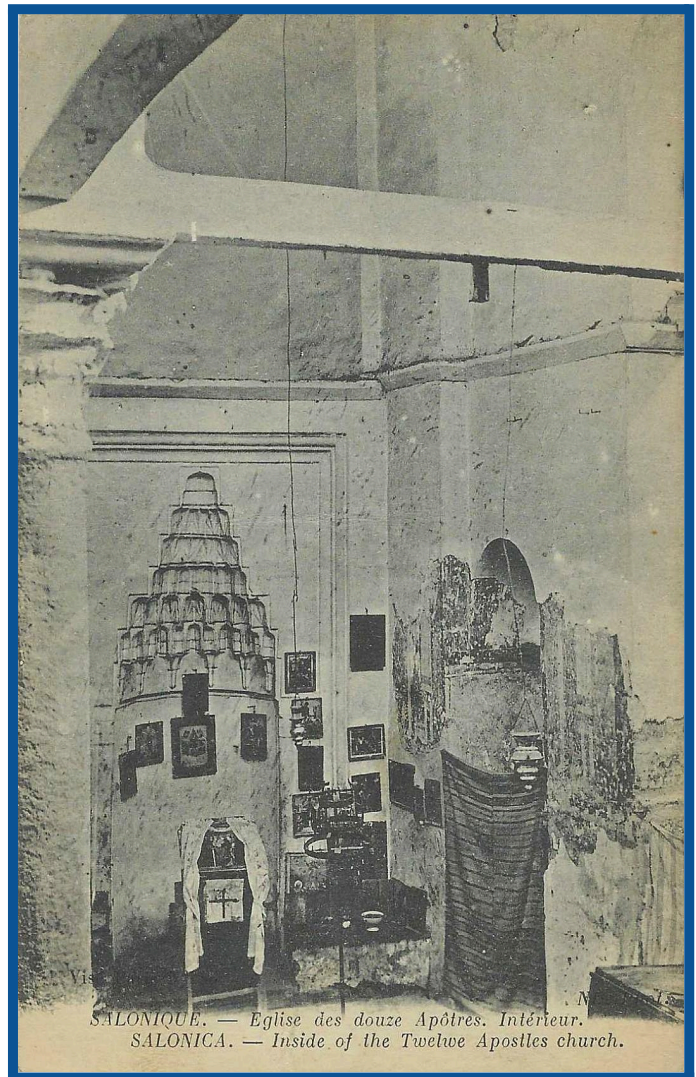


Visé Paris N° 29  
ND. Pl.  
SALONIQUE. — Eglise des Douze Apôtres.  
SALONICA. — The church of the twelve Apostles.

Twelve Apostles church

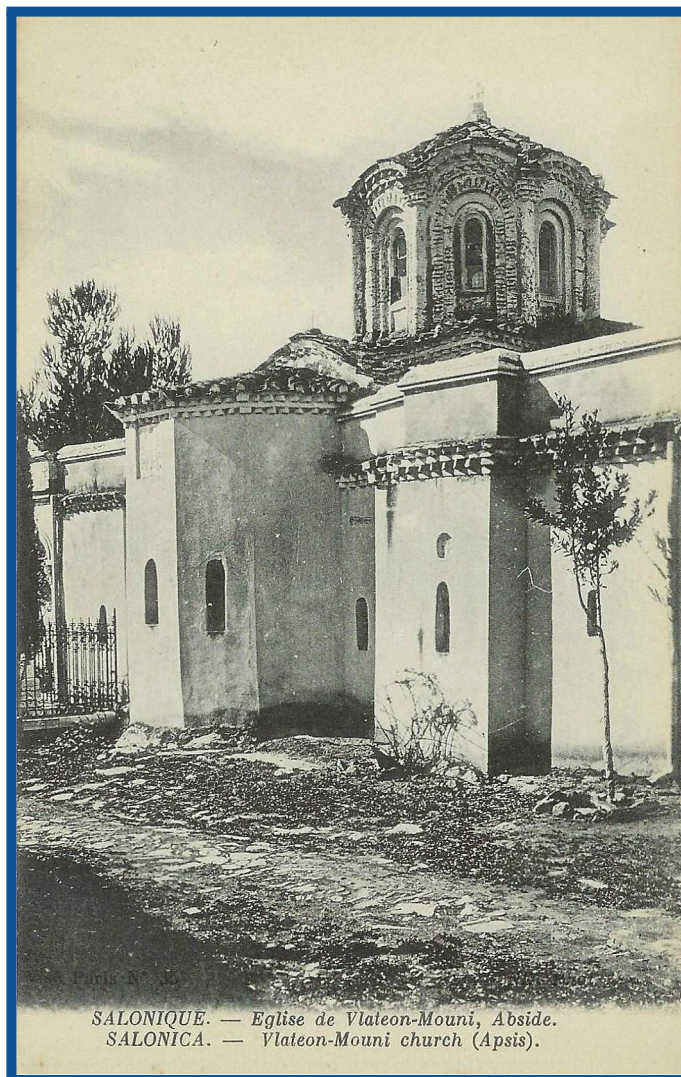


Visé Paris N° 31  
ND.  
SALONIQUE. — Eglise des douze Apôtres, Abside.  
SALONICA. — The church of the twelve Apostles (Apsis).



Visé Paris N° 32  
ND.  
SALONIQUE. — Eglise des douze Apôtres, Intérieur.  
SALONICA. — Inside of the Twelve Apostles church.





SALONIQUE. — Eglise de Vlateon-Mouni, Abside.  
SALONICA. — Vlateon-Mouni church (Apsis).

Vlateon monastery church



Mise Paris N° 33

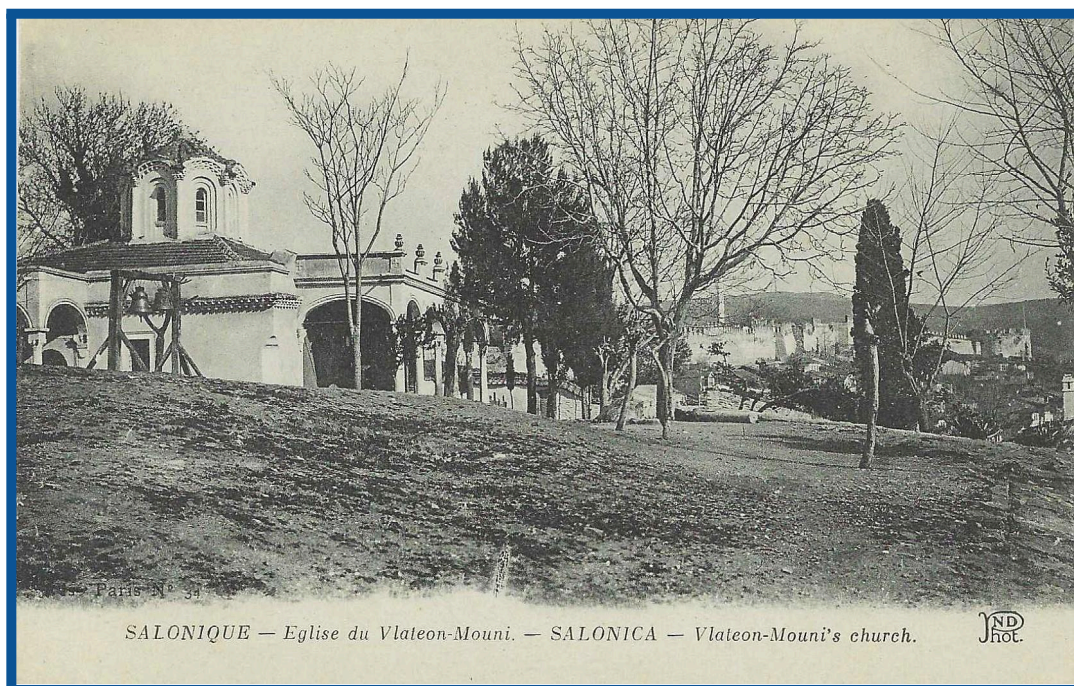
SALONIQUE. — Eglise de Vlateon-Mouni.  
SALONICA. — Vlateon-Mouni church. — SALONICCO. — La Chiesa di Vlateon-Mouni.

ND. Phot.

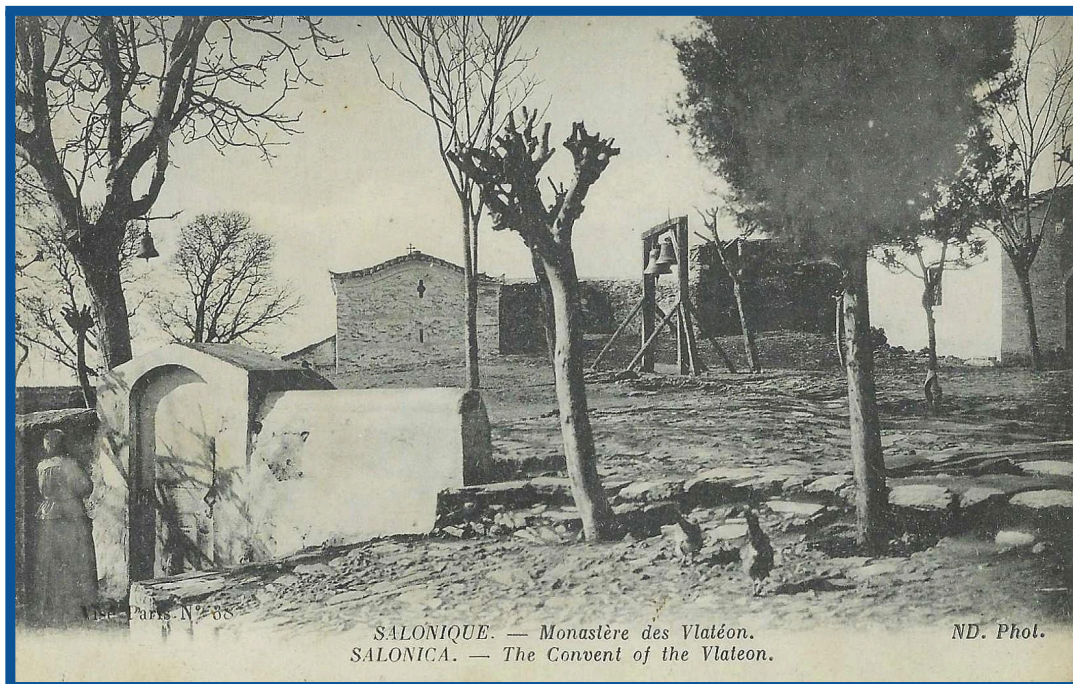




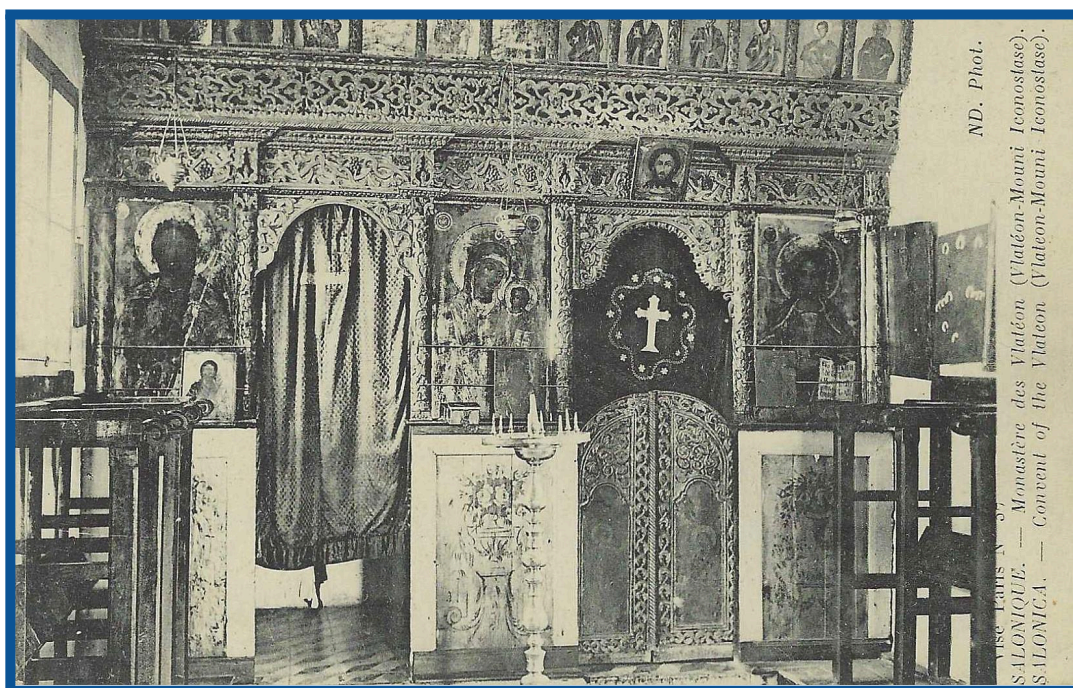
Vlateon monastery church







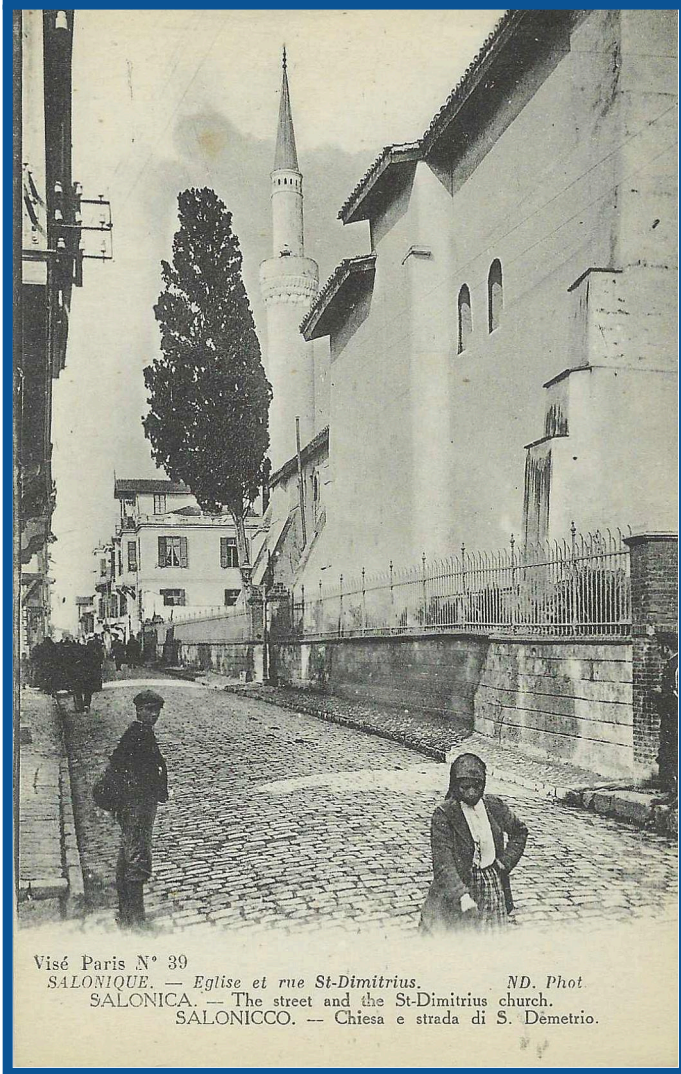
Vlateon monastery church



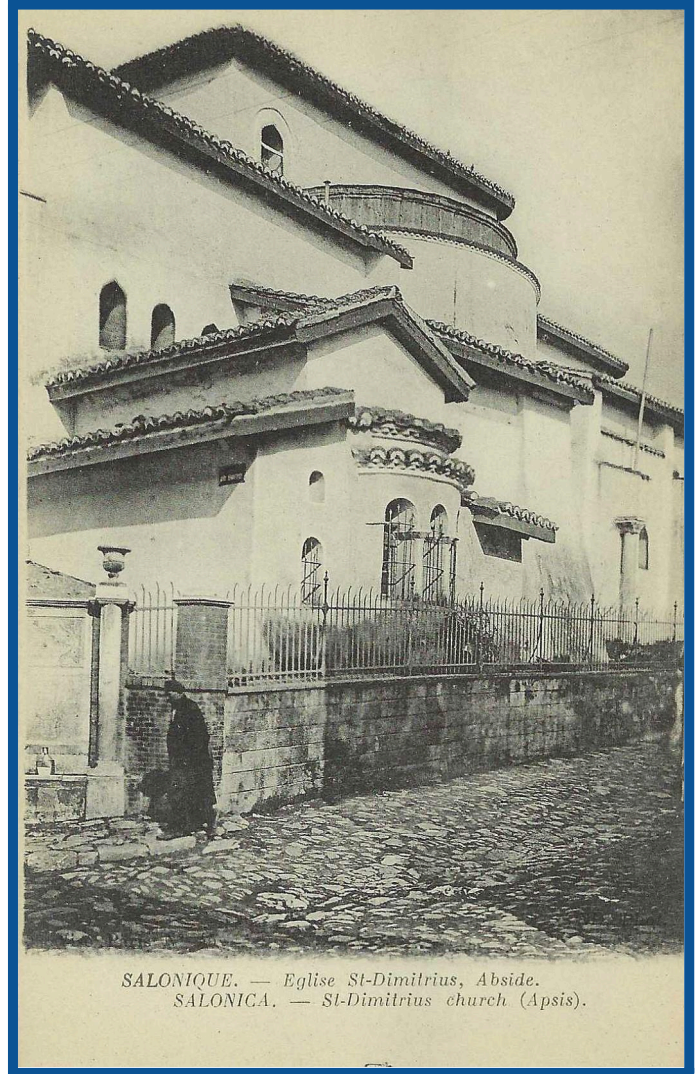
Vlateon monastery church (interior)

ND. Phot.



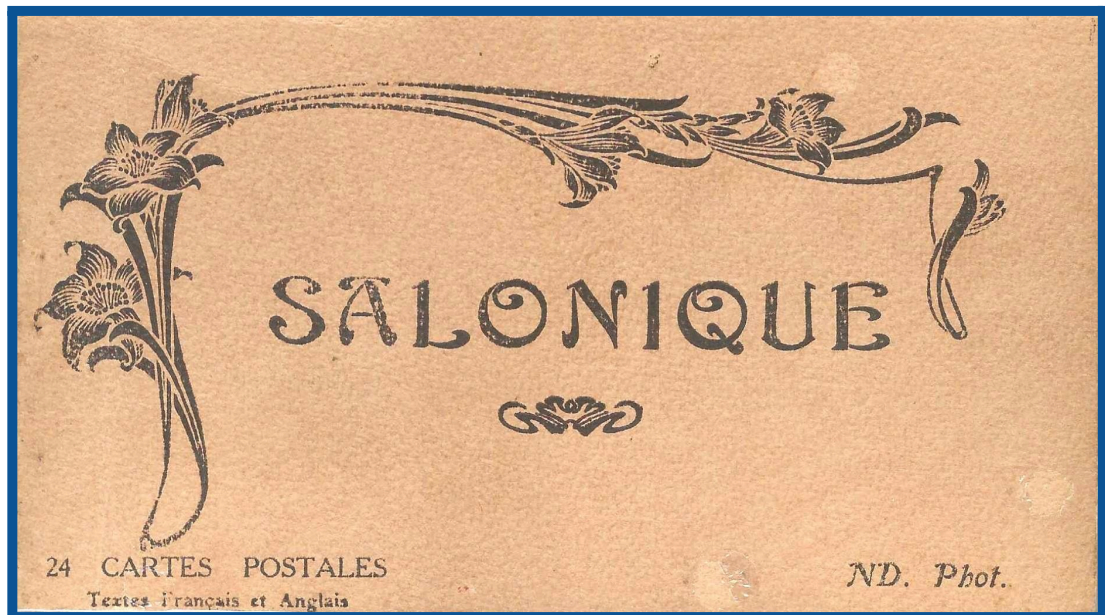


Visé Paris N° 39  
SALONIQUE. — Eglise et rue St-Dimitrius. ND. Phot.  
SALONICA. — The street and the St-Dimitrius church.  
SALONICCO. — Chiesa e strada di S. Demetrio.

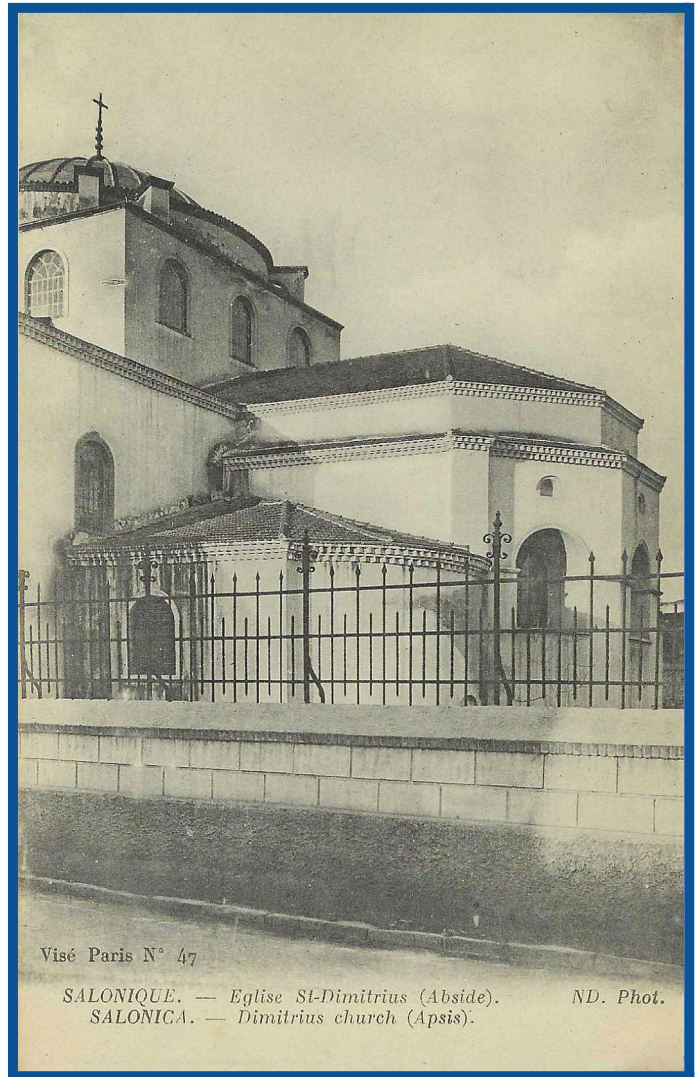
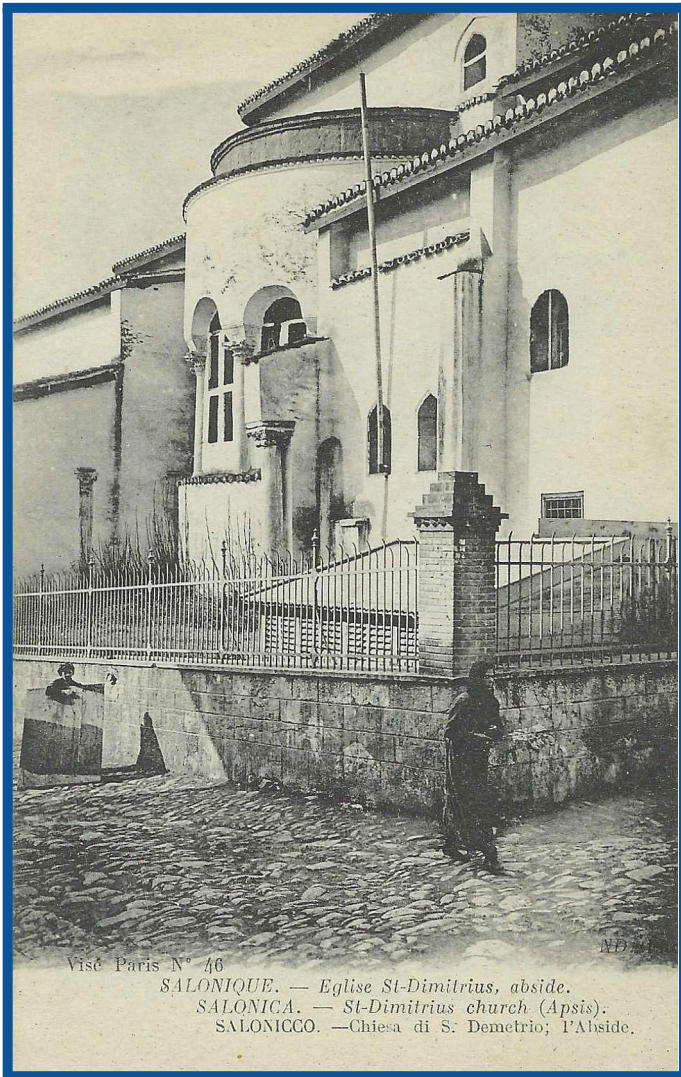


SALONIQUE. — Eglise St-Dimitrius, Abside.  
SALONICA. — St-Dimitrius church (Apsis).

St. Demetrius church



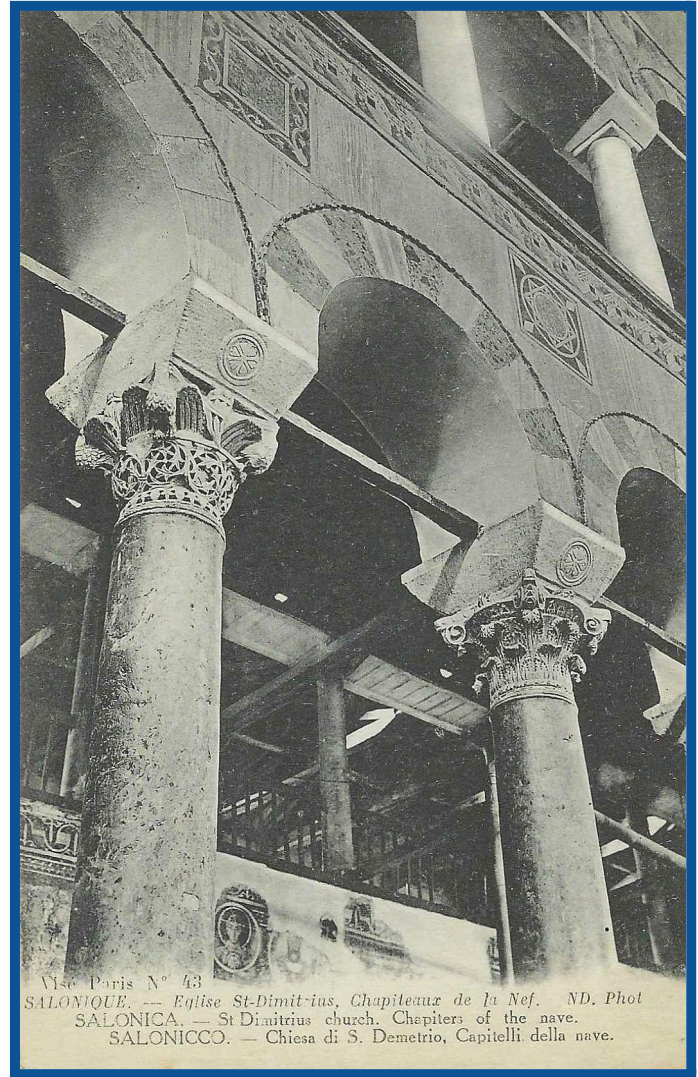
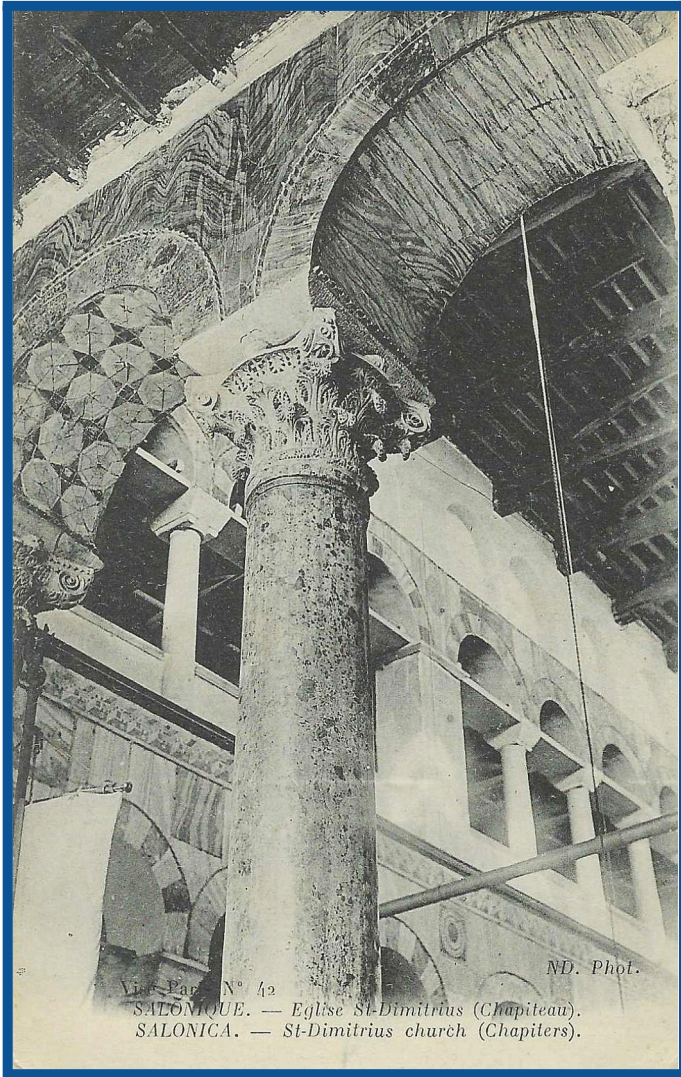




St. Demetrius church



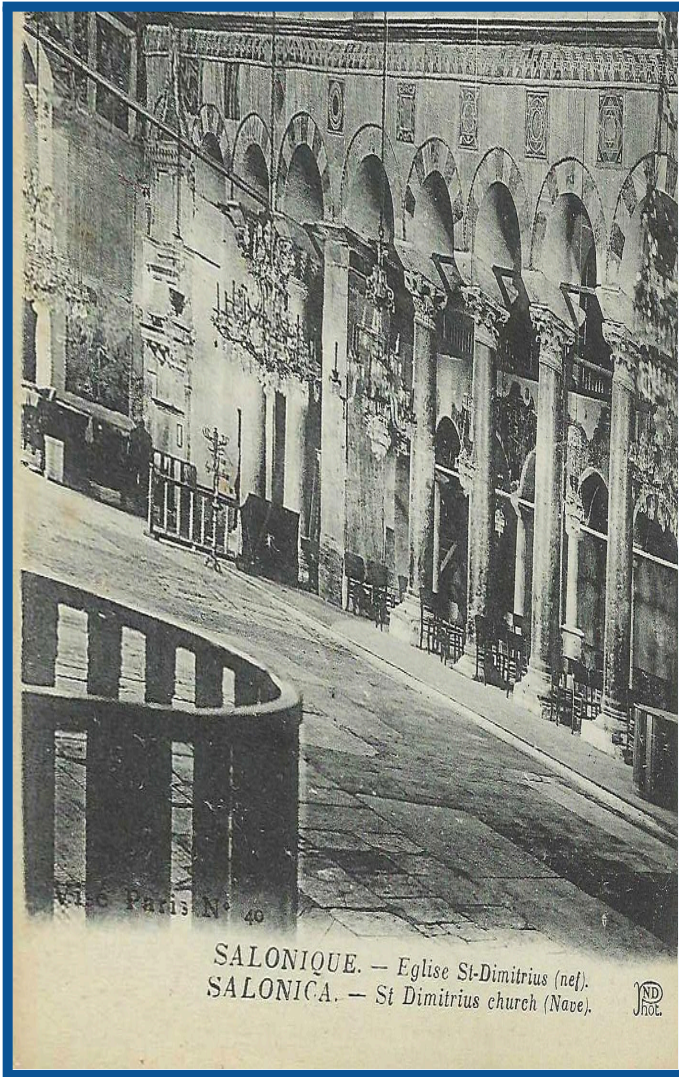




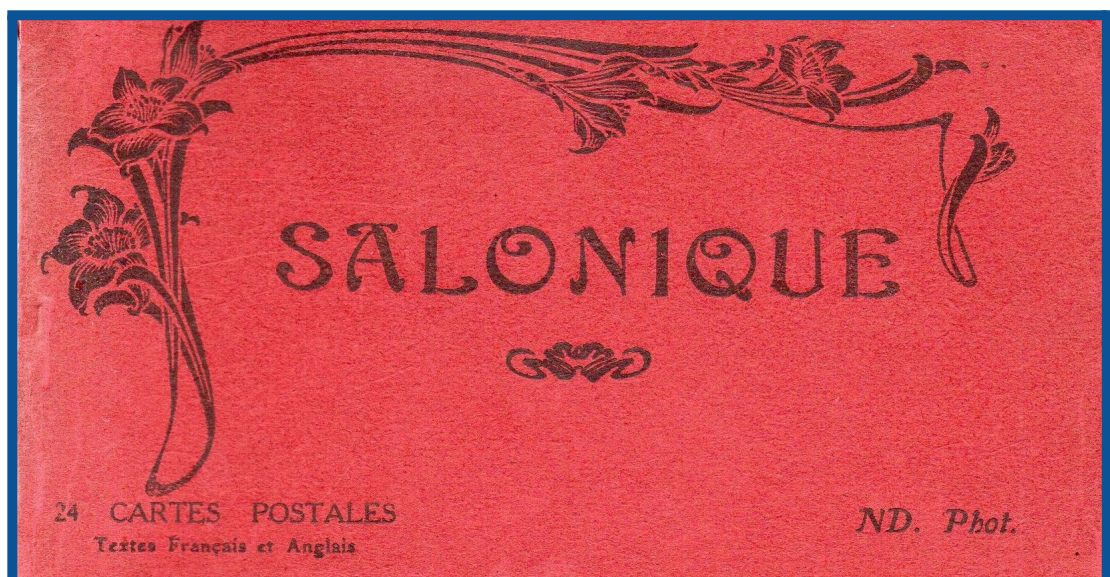
St. Demetrius church  
(interior)



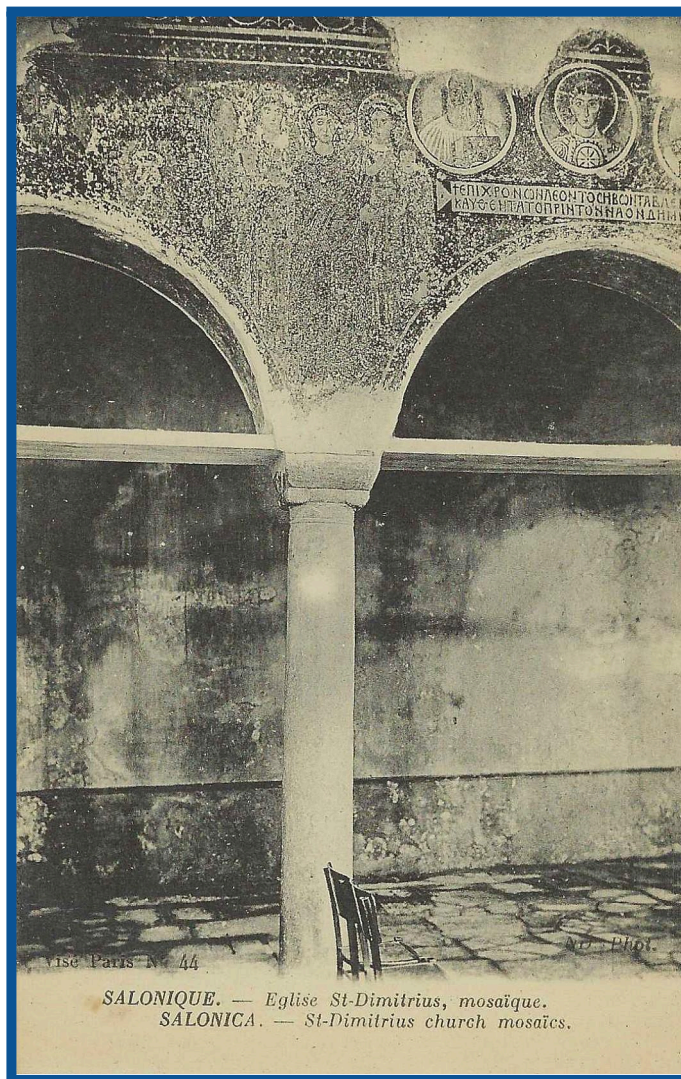




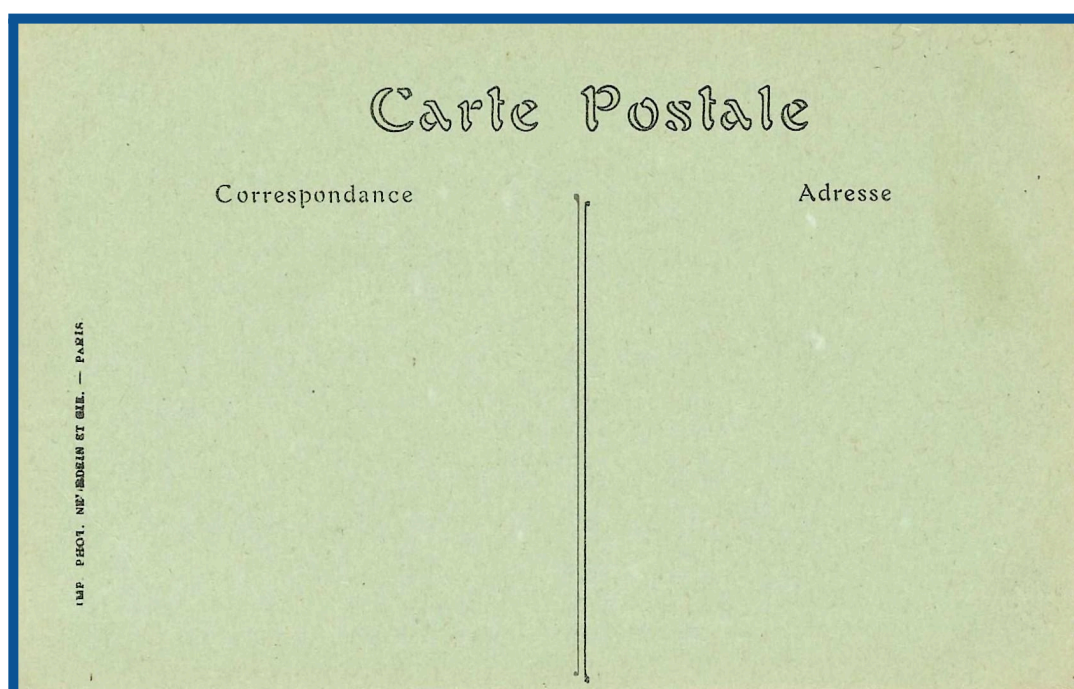
St. Demetrius church  
(interior)







St. Demetrius church (interior)

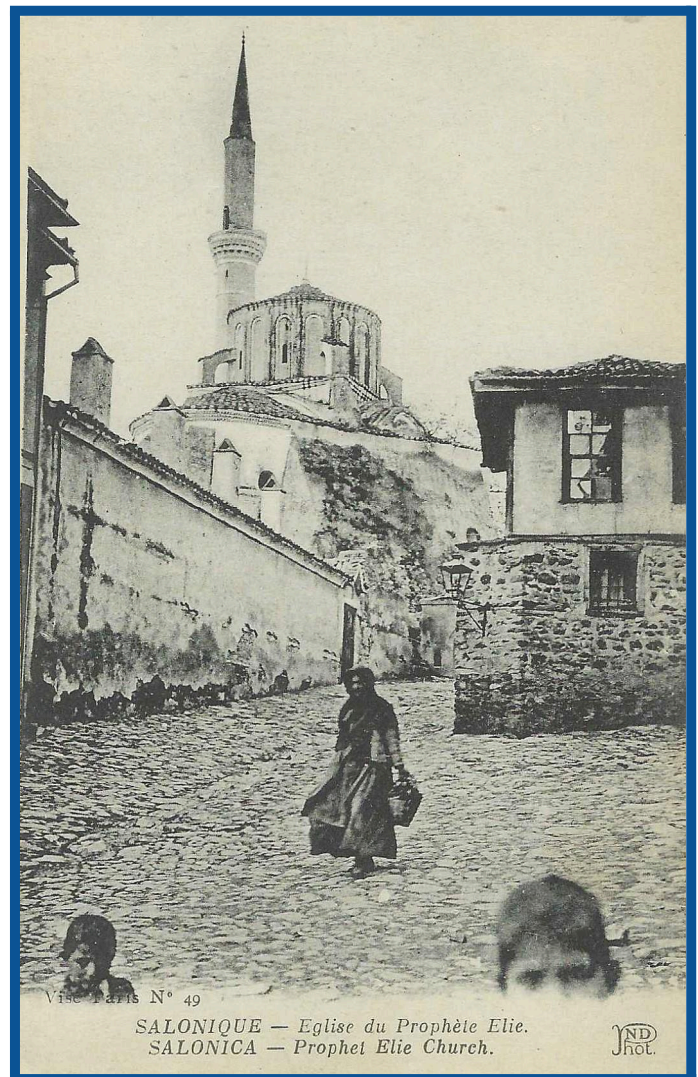
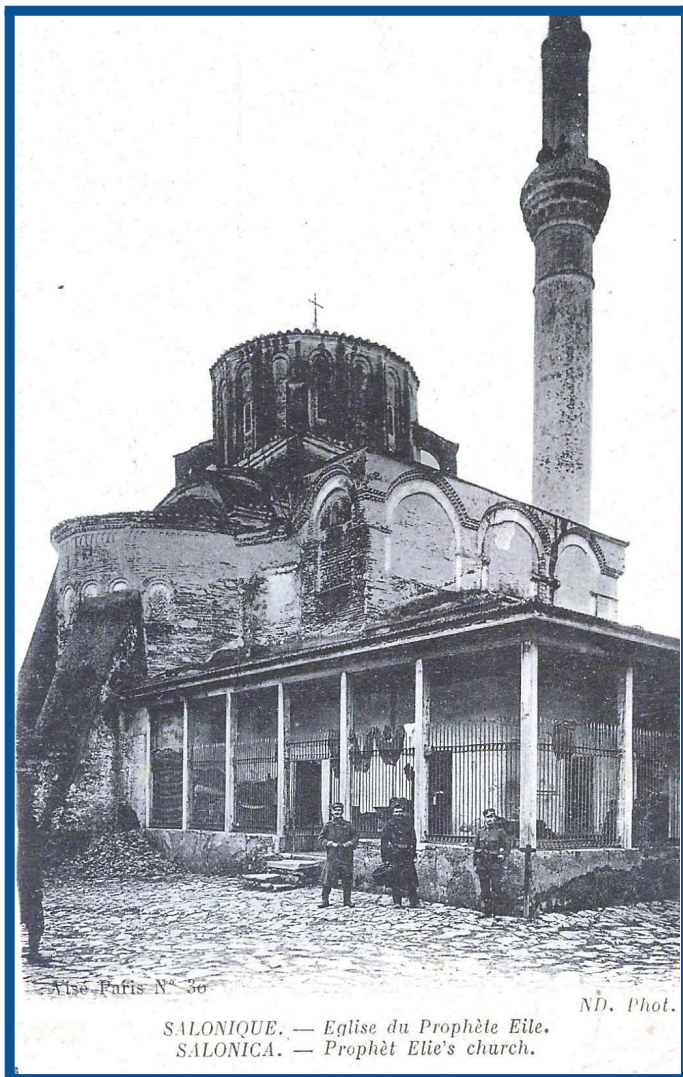


The Green cardboard issue

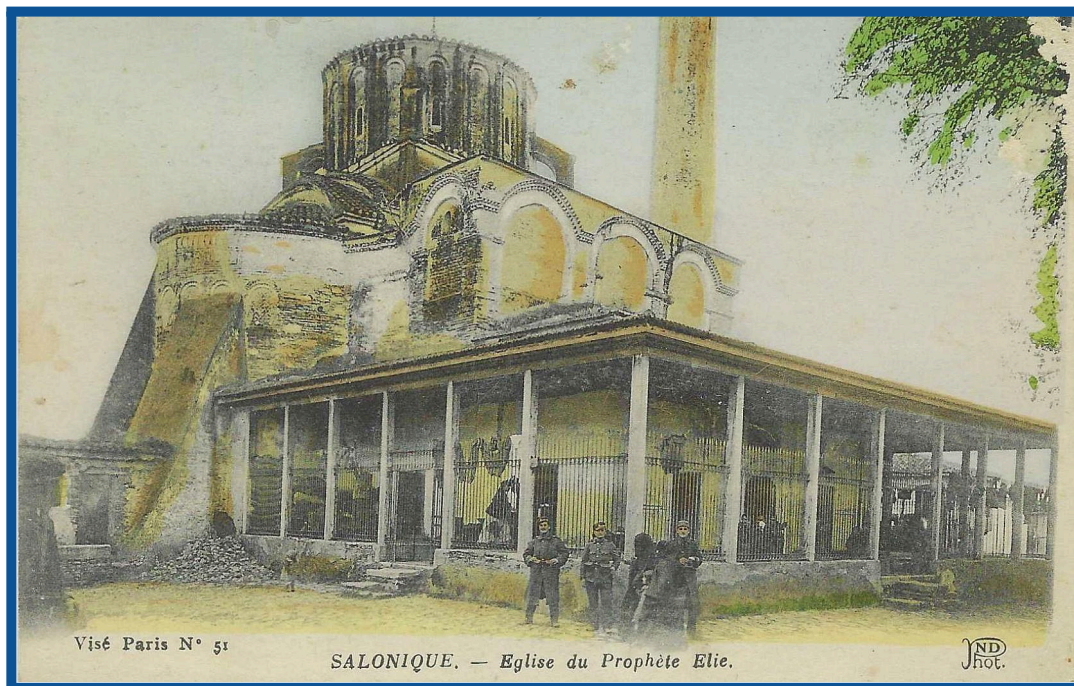




Prophet Elie church





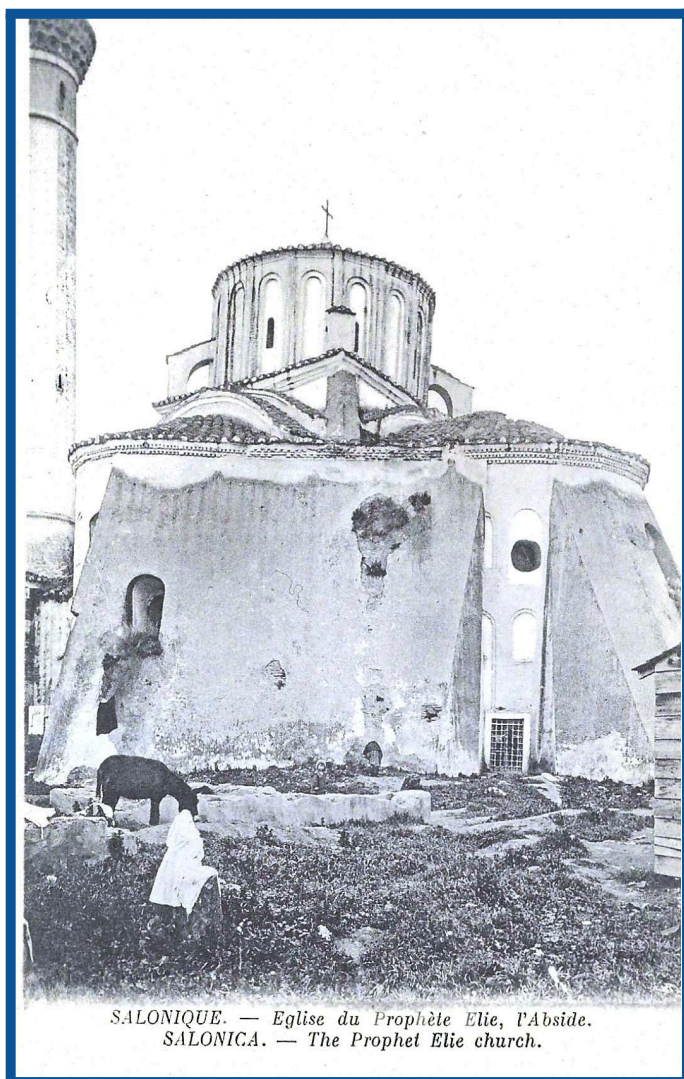


Visé Paris N° 51

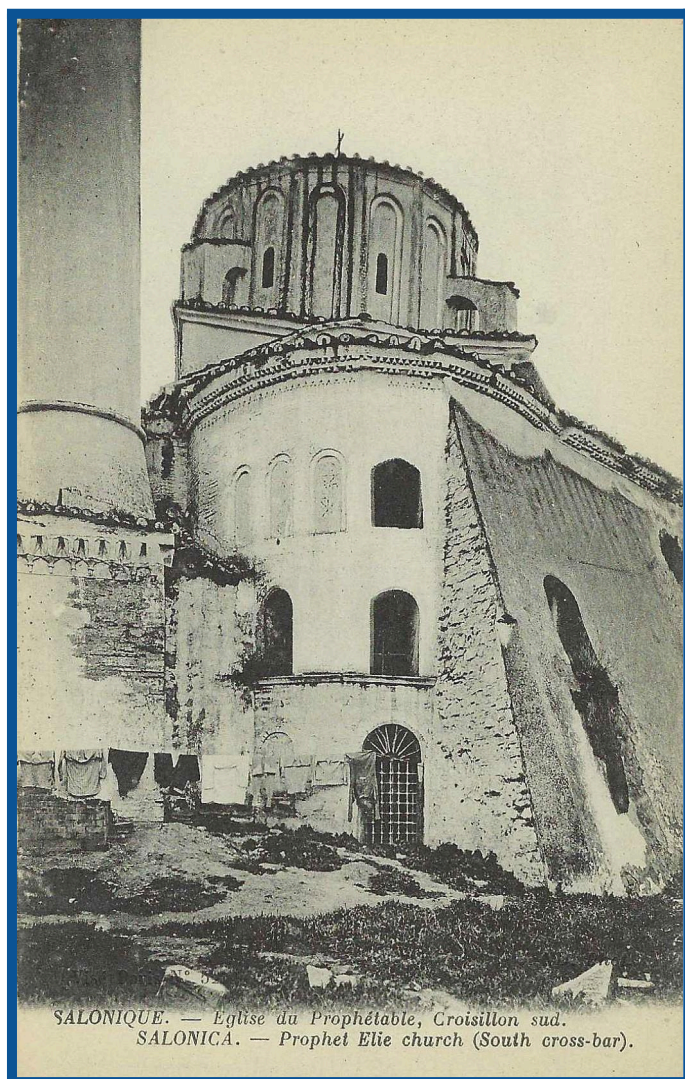
SALONIQUE. — Eglise du Prophète Elie.

JND  
Phot.

Prophet Elie church

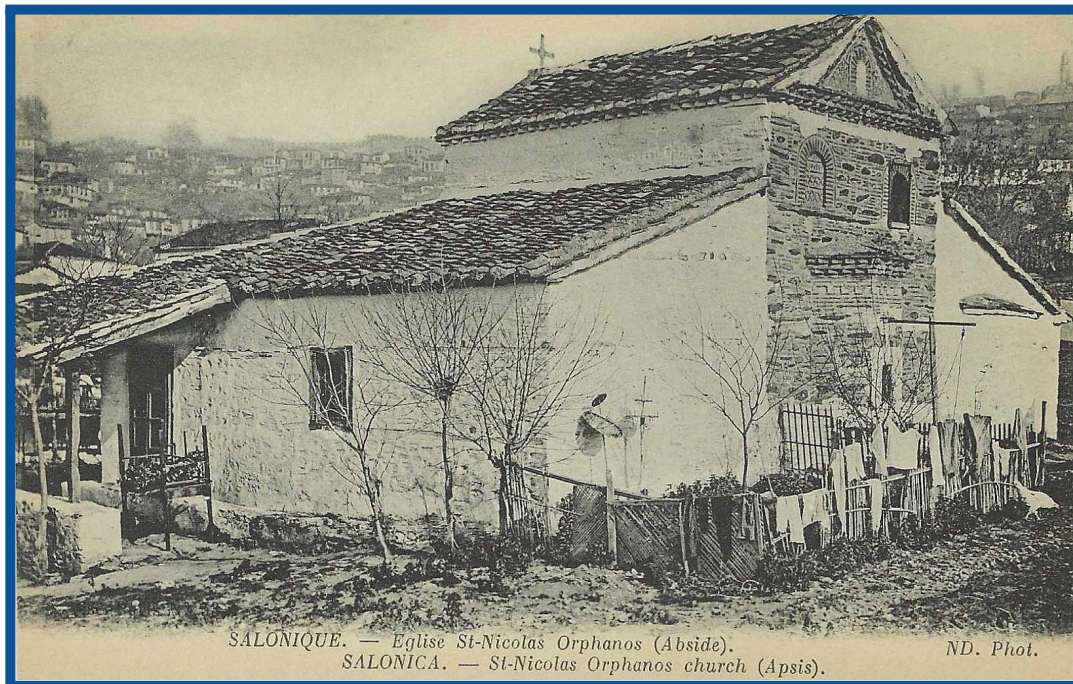


SALONIQUE. — Eglise du Prophète Elie, l'Abside.  
SALONICA. — The Prophet Elie church.



SALONIQUE. — Eglise du Prophète, Croisillon sud.  
SALONICA. — Prophet Elie church (South cross-bar).

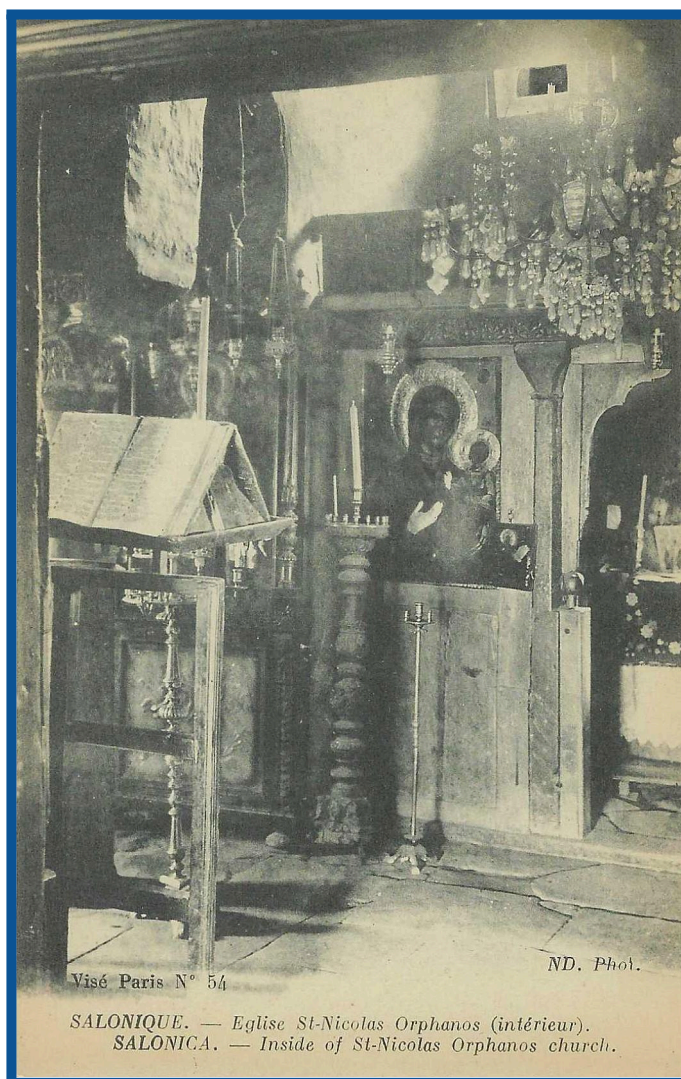




*SALONIQUE. — Eglise St-Nicolas Orphanos (Abside).  
SALONICA. — St-Nicolas Orphanos church (Apsis).*

*ND. Phot.*

### St. Nicolas Orphanos church

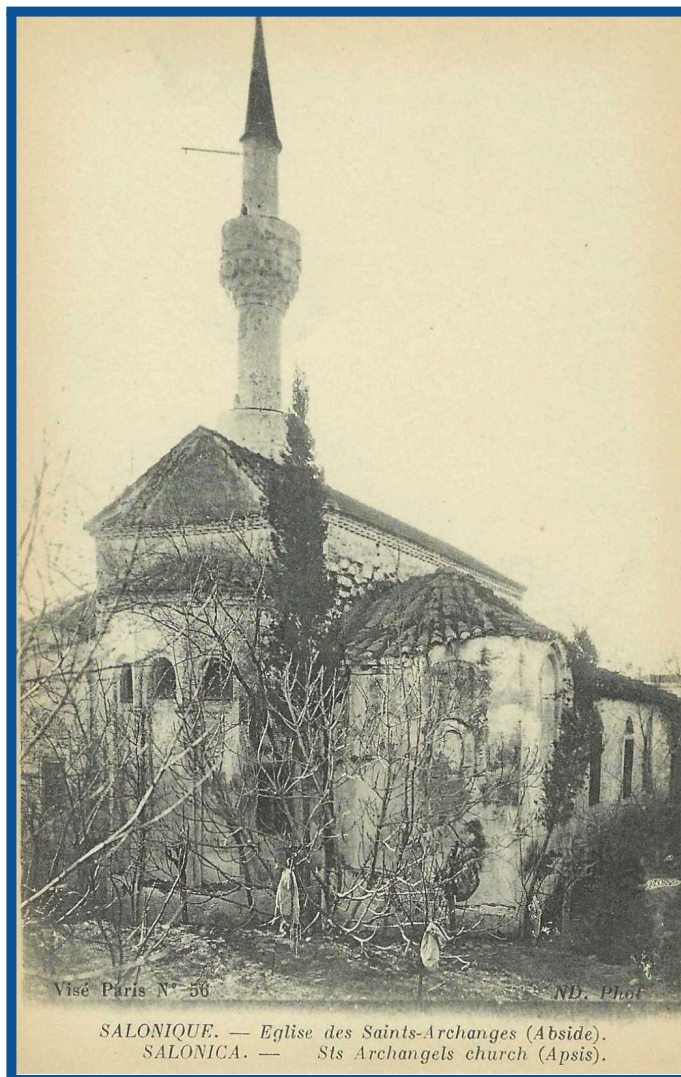


*Visé Paris N° 54*

*ND. Phot.*

*SALONIQUE. — Eglise St-Nicolas Orphanos (intérieur).  
SALONICA. — Inside of St-Nicolas Orphanos church.*





Visé Paris N° 56

ND. Phot

SALONIQUE. — Eglise des Saints-Archanges (Abside).  
SALONICA. — Sts Archangels church (Apsis).

St. Archangels church



Visé Paris N° 55

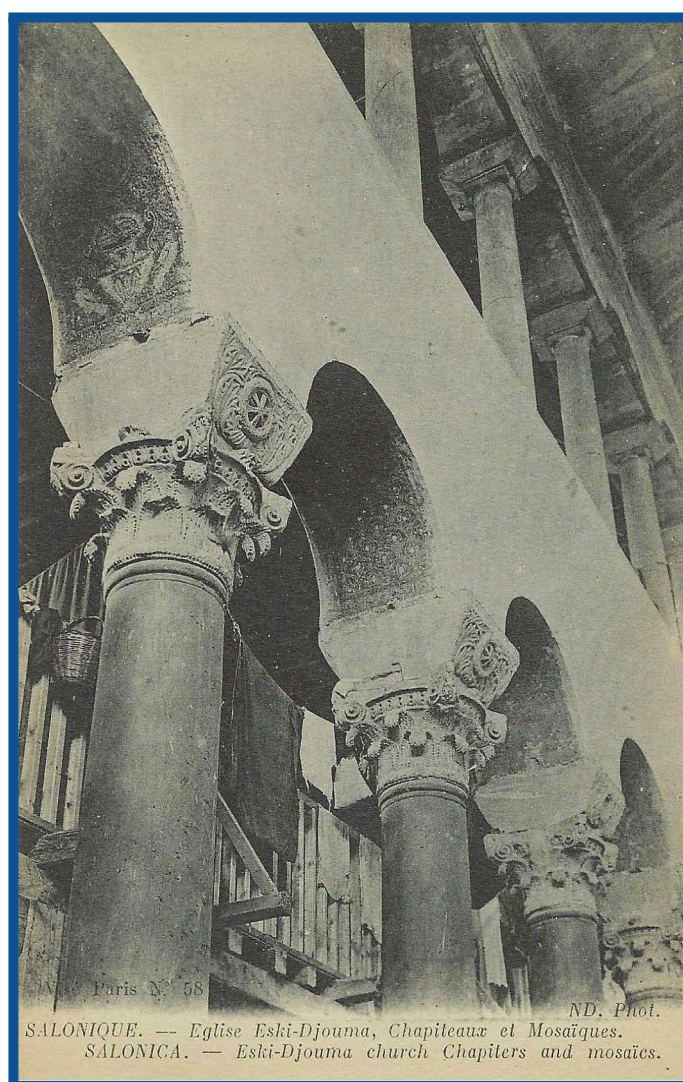
ND. Phot.

SALONIQUE. — Eglise des Saints-Archanges. — SALONICA. — Sts Archangels church.





Eski Djouma church



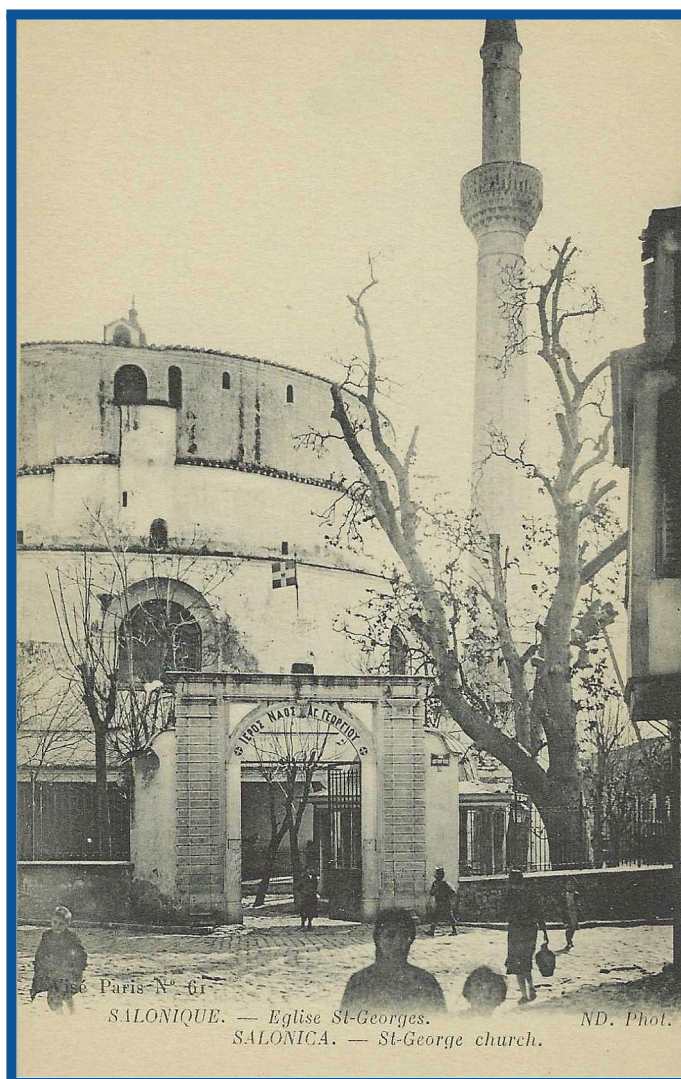




SALONIQUE. — Eglise Saint-Georges — SALONICA. — St-George church.

ND.  
Phot.

### St. George church

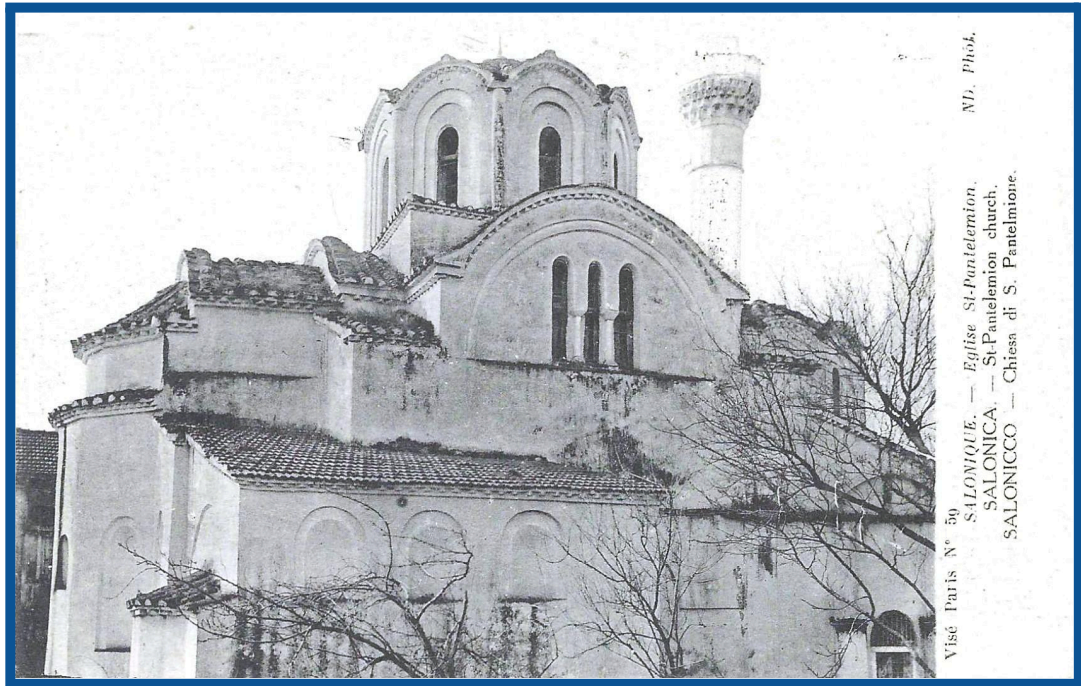


Visé Paris-N° 61

SALONIQUE. — Eglise St-Georges.  
SALONICA. — St-George church.

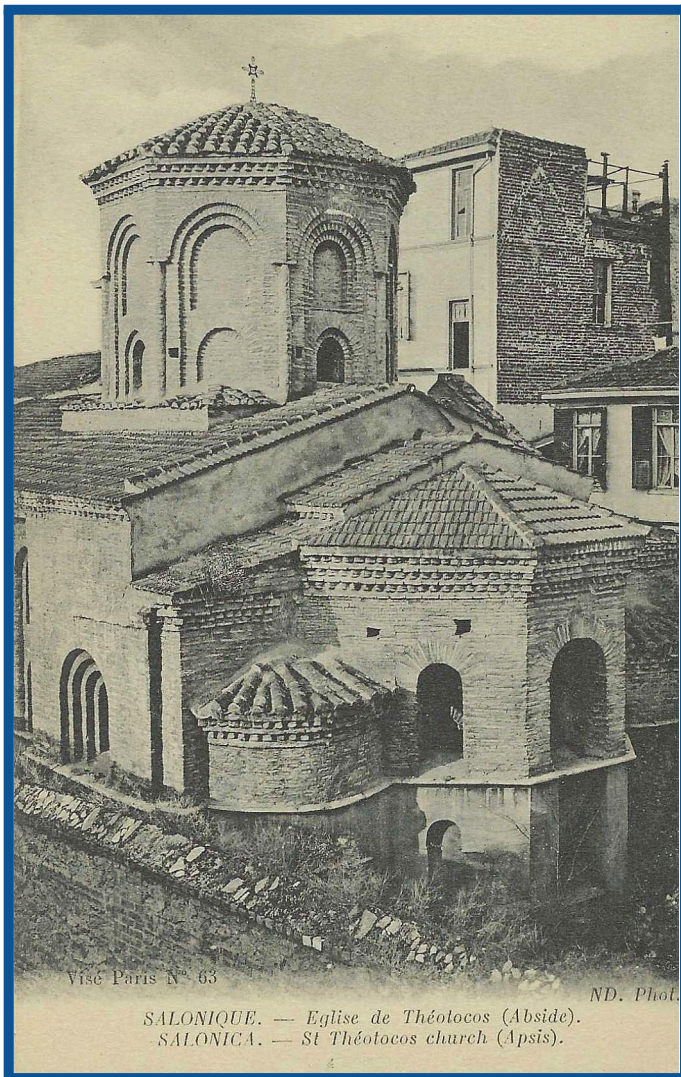
ND. Phot.





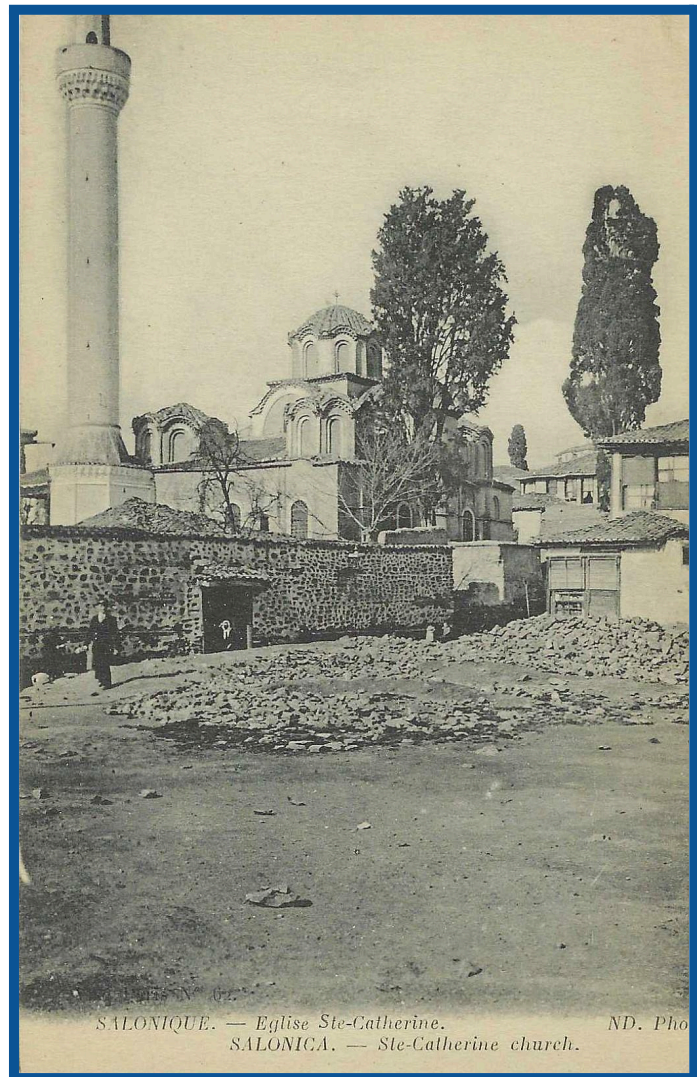
Visé Paris N° 59  
SALONIQUE. — Eglise St-Panteleimon.  
SALONICA. — St-Panteleimon church.  
SALONICCO — Chiesa di S. Panteleione.  
ND. Phot.

St. Panteleimon church



Visé Paris N° 63  
SALONIQUE. — Eglise de Théotocos (Abside).  
SALONICA. — St Théotocos church (Apsis).  
ND. Phot.

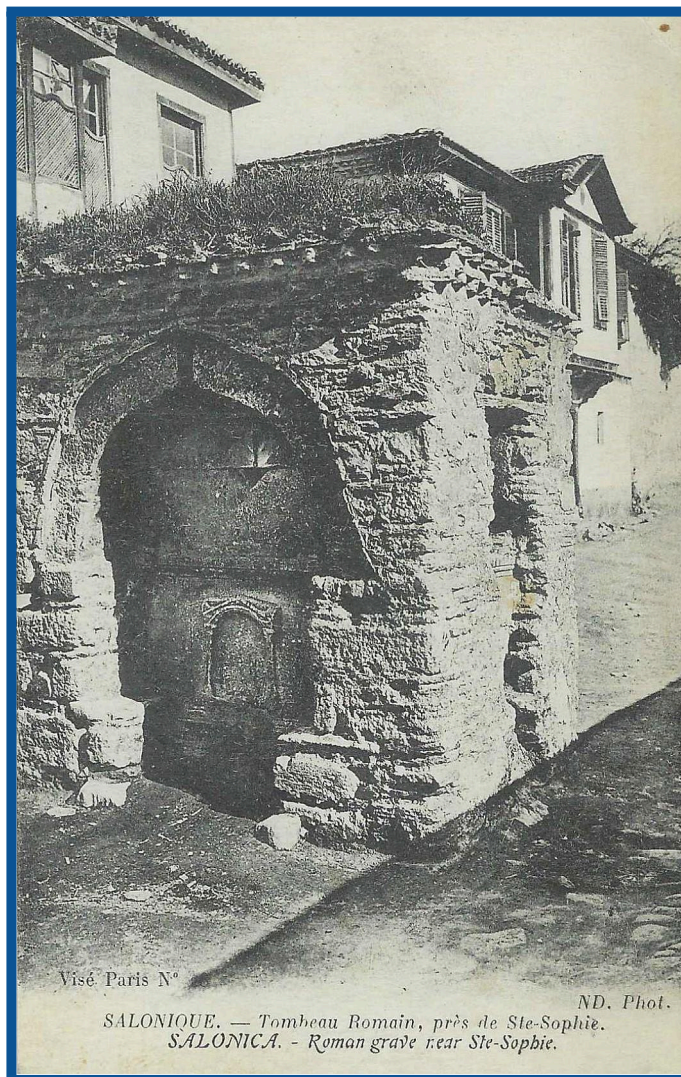
St. Theotokos church



Visé Paris N° 62  
SALONIQUE. — Eglise Ste-Catherine.  
SALONICA. — Ste-Catherine church.  
ND. Pho

St. Catherine church



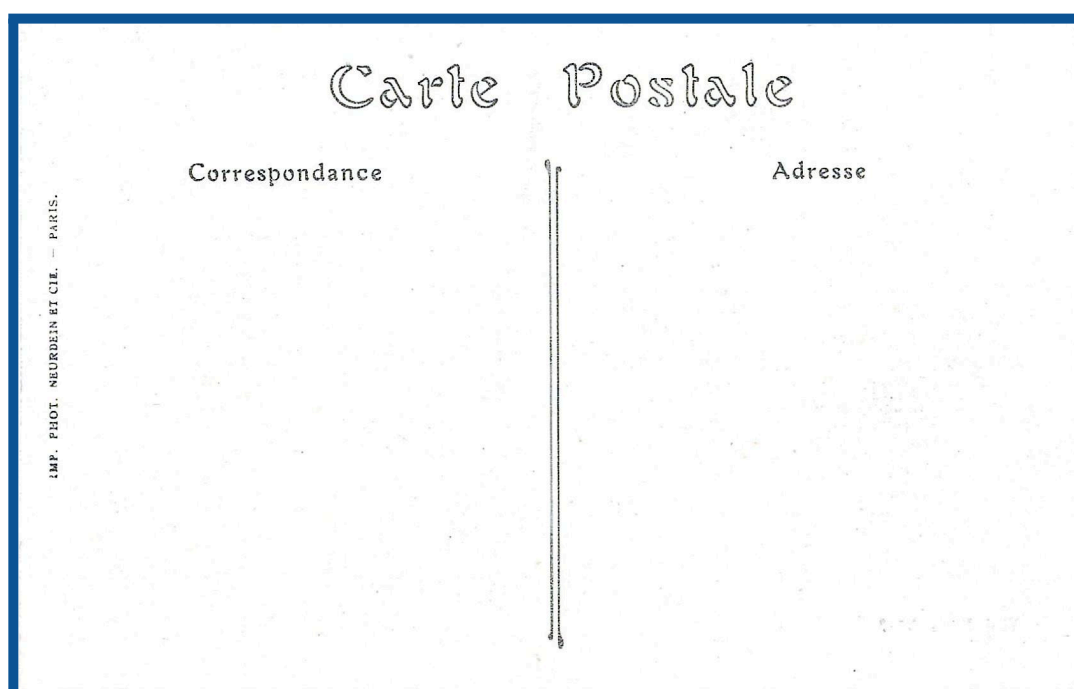


Visé Paris N°

ND. Phot.

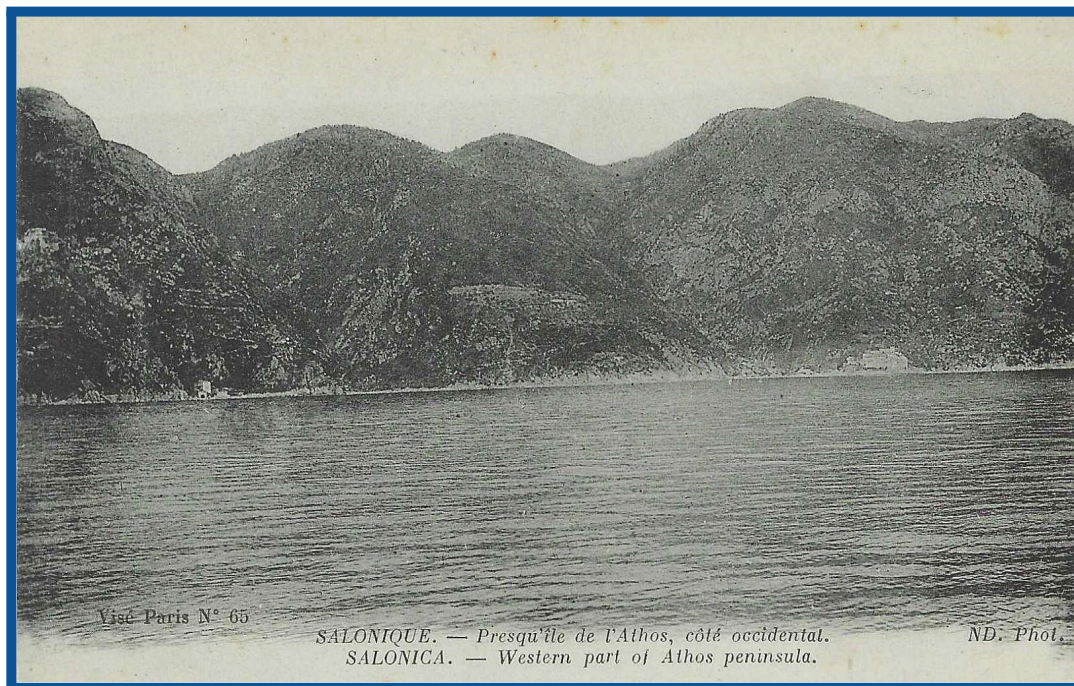
SALONIQUE. — Tombeau Romain, près de Ste-Sophie.  
SALONICA. - Roman grave near Ste-Sophie.

Roman Tomb near St. Sophia

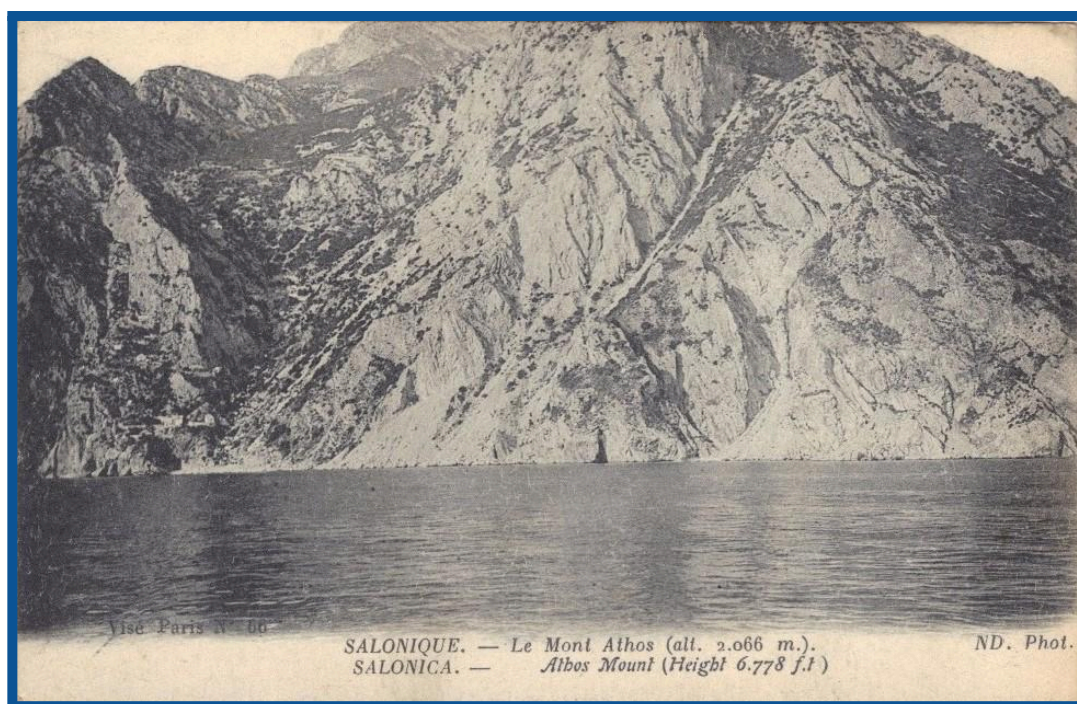


The white cardboard issue





Mount Athos (Western side)



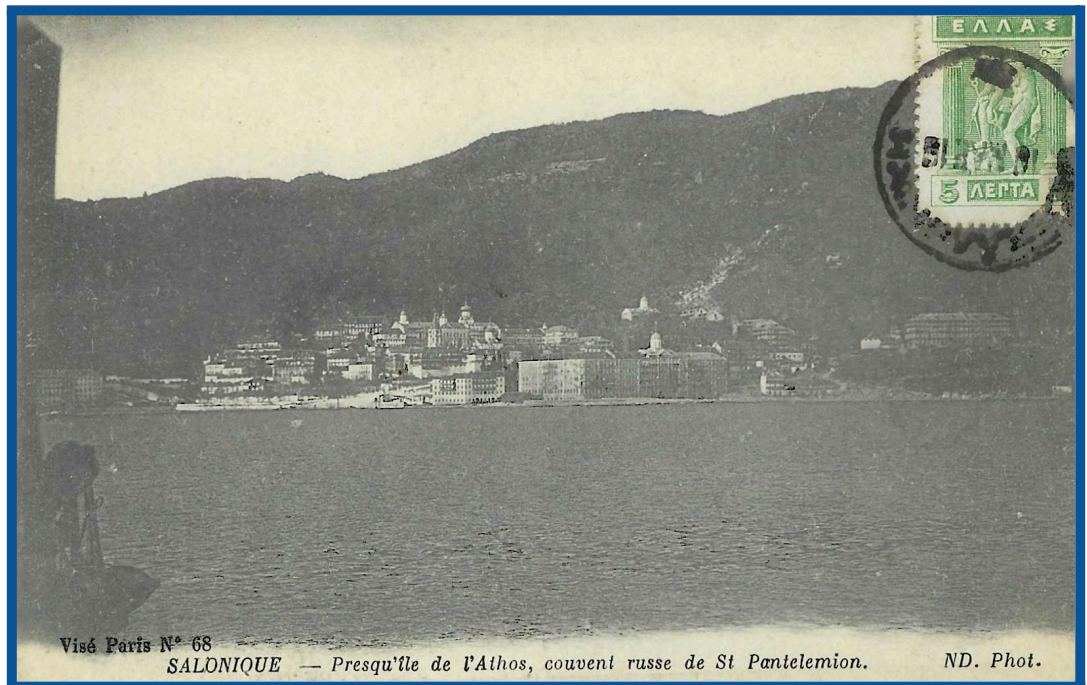
Mount Athos (Height 6778 ft)







Mount Athos  
Xenophontos  
convent



Mount Athos  
St.Panteleimon  
Russian convent



Mount Athos  
Chilandariou  
convent